

Universal Garage Door Opener Remote Control

Model G7M

1. INTRODUCTION

Thank you for purchasing the Skylink® G7M garage door opener remote control. With the newly invented rotary switch, programming is much easier than before. With 2 buttons, you may operate up to 2 garage door openers from the same remote.

In this package, you will find a garage door remote with a 3V lithium battery installed (CR-2032), a visor clip and a mounting bracket.



Remote Control (Battery included)



Mounting bracket



Visor clip

2. PROGRAMMING

Before proceeding with the programming, you must know the brand of your garage door opener. For some of the brands, you must also know the manufacture year. Please refer to the table below to select which group (from 1-10), your existing garage door opener belongs to.

Table A

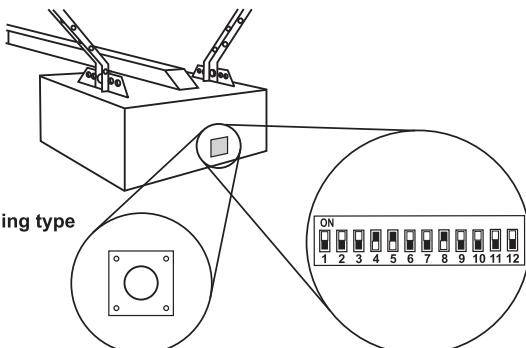
Group	Brand	Frequency (MHz)
1	Chamberlain®, Sears Craftsman®, LiftMaster® (After 1997)	315 / 390
2	Chamberlain®, Sears Craftsman®, LiftMaster® (Before 1997)	390
3	Chamberlain®, Sears Craftsman®, LiftMaster® (Before 1997 Canada)	315
4	Genie® IntelliCode™, Overhead Door® - DIP switches	390
5	Genie® - 9 / 12 DIP switches	315 / 390
6	Stanley® / Multicode® - 10 dip switches	300
7	Linear® DIP Switches, Pulsar®	310
8	Skylink® DIP Switches	310 / 390
9	Skylink® Rolling Code	318
10	Skylink® Lighting / Linear® Megacode™	317.5 / 433.9

The following programming steps involve selecting the brand of your garage door opener as well as the frequency setting. Please follow the detailed instructions below in order to set-up the Skylink® Model G7M to work with your existing opener.

If your existing opener has no DIP switches, it belongs to a "Learning" type opener. Please follow Instructions 2A.

If your existing opener has DIP switches, it belongs to a DIP switch setting opener. Please follow Instructions 2B.

Most openers on the market manufactured after 1997 belong to a Learning Type opener. Check the main opener unit on the ceiling of your garage. If you see a row of mini switches, your opener belongs to a DIP switch type motor. If you do not see mini switches but you do see a **Learn Button**, your opener belongs to a Learning type motor. If you are not certain which type you have, please contact Skylink's customer support team.



Learning type

LEARN Button

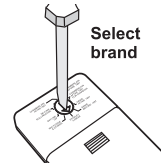
OR

DIP switches

2. PROGRAMMING (CONT)

2A - Learning Type

1. Position the rotary switch so that the arrow points to the brand of your existing opener. For example, if you have a Chamberlain® (After 1997), place the rotary switch to Group 1.



Select brand

2. Press and hold both buttons on the Model G7M remote at the same time for 5 seconds. The green LED will turn ON and then it will start flashing after 5 seconds. At this point release both buttons. You have 15 seconds to select the frequency; otherwise you will have to start over again.



Press & hold both buttons - 5sec.

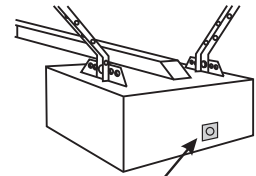
3. Follow Table A to select the frequency of your opener. In some cases, you may not need to change the rotary switch setting, since the original position may transmit at the required frequency. If you have a Chamberlain® opener (after 1997), the opener may operate at 315MHz or 390MHz. Place the rotary switch at a group that transmits at these frequencies. In this example, you can place the rotary switch in group 1.

4. Press the button you would like to use on the Model G7M to operate that opener. The LED will turn off meaning you have successfully setup the Model G7M desired button.



Press the desired button

5. You now need to program the G7M remote to the opener unit mounted on the ceiling of your garage. There should be a learn button on the opener unit. Press the learn button for 2 seconds. The LED next to the learn button will either turn on or start to flash.



Learn Button

6. Press the button on the Model G7M that you have already setup to operate this opener.



Press the desired button

7. The LED on the opener unit will turn off indicating you have successfully programmed the G7M remote to operate your garage door opener.

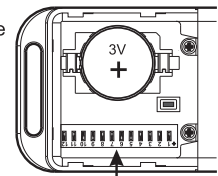
2B - DIP Switches

1. Position the rotary switch so that the arrow points to the brand of your existing opener. For example, if you have a Stanley 10 DIP, place the rotary switch to Group 6.



Select brand

2. Open the battery compartment and set the DIP switches so they match with the DIP switches setting found in your existing remote control or in the main opener unit



Match DIP switches setting of your existing remote control

Note:

3-position DIP switch: - If your garage door opener or remote has the 3-position DIP switch, DO NOT use the '0' position, use '+' or '-'. Set the DIP switch in G7M to 'ON' for '+' or 'OFF' for '-' respectively.

OTHER BRAND



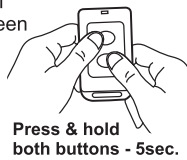
G7M



For more information, please visit www.devancocanada.com or call toll free at 855-931-3334

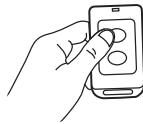
2. PROGRAMMING (CONT)

- Press and hold both buttons on the Model G7M remote at the same time for 5 seconds. The green LED will turn ON and then it will start flashing after 5 seconds. At this point release both buttons. You have 15 seconds to select the frequency; otherwise you will have to start over again.



- Follow Table A to select the frequency of your opener. If you have a Stanley® 10 dip switch opener (Group 6) and the opener operates at 310 MHz, you should then place the rotary switch at a group that transmits at that frequency, which would be group 7.

- Press the button you would like to use on the Model G7M to operate the opener.



- The LED on the opener unit will turn off indicating you have successfully programmed the G7M remote to operate your garage door opener.

Example: If you have a Pulsar® opener that operates at 318MHz, select the brand from Group #7 (Linear® and Pulsar®) and the frequency from either Group #9 or #10 in Table A.

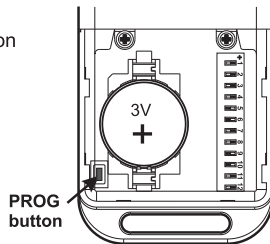
3. OPERATION

You may operate up to 2 garage door openers: one with button 1 and the other with button 2.

Press the desired button to operate the garage door opener. The green LED will flash when signal transmission occurs.

* Note: If you experience interference with other garage door openers (Genie® Intellicode™ or Chamberlain® Security +), you may follow the below steps to change the factory code to avoid interference.

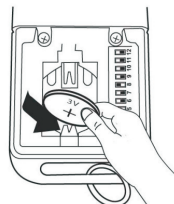
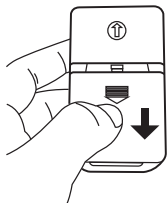
- Open the battery cover.
- There is a PROG button next to the battery. Press and hold the PROG button for 3 seconds, the green LED will start flashing.
- Press the desired button on the model G7M. The green LED will turn off.
- Close the battery cover.
- Start from the beginning to setup the desired button and program the G7M to the opener and then test again.



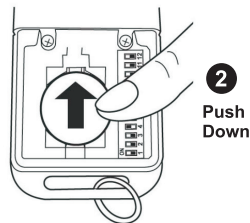
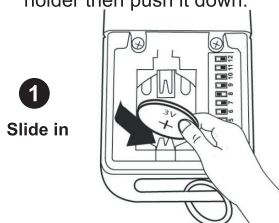
4. BATTERY REPLACEMENT

Follow the instructions below to replace the battery.

- Open the battery cover.
- Remove the battery by lifting it up and away from the battery holder.



- Slide a new battery into the battery holder then push it down.



- Close the battery cover.

5. WARNING

If this transmitter triggers other garage doors in your neighborhood, change all your transmitters and your receiver to a new code setting.

DO NOT let children use the garage door transmitter without adult supervision. Children can injure themselves or others with the garage door.

6. FCC

This device complies with Part 15 of the FCC Rules. Operation is subject to the following two conditions: (1) This device may not cause harmful interference, and (2) This device must accept any interference received, including interference that may cause undesired operation.

WARNING:

Changes or modifications to this unit not expressly approved by the party responsible for compliance could void the user's authority to operate the equipment.

NOTE:

This equipment has been tested and found to comply with the limits for a Class B digital device, pursuant to Part 15 of the FCC Rules. These limits are designed to provide reasonable protection against harmful interference in a residential installation. This equipment generates, uses and can radiate radio frequency energy and, if not installed and used in accordance with the instructions, may cause harmful interference to radio communications.

However, there is no guarantee that interference will not occur in a particular installation. If this equipment does cause harmful interference to radio or television reception, which can be determined by turning the equipment off and on, the user is encouraged to try to correct the interference by one or more of the following measures:

- Reorient or relocate the receiving antenna.
- Increase the separation between the equipment and receiver.
- Connect the equipment into an outlet on a circuit different from that to which the receiver is connected.
- Consult the dealer or an experienced radio/TV technician for help.

7. WARRANTY

If, within one year from the date of purchase, this product should become defective (except battery), due to faulty workmanship or materials, it will be repaired or replaced, without charge. Proof of purchase and a Return Authorization Number are required.

HOW TO ORDER REPAIR PARTS

DEVANCO CANADA

19192 HAY ROAD, UNIT Q
SUMMERSTOWN, ON K0C 2E0

TOLL FREE: 855-931-3334

www.devancocanada.com

WHEN ORDERING REPAIR PARTS
PLEASE SUPPLY THE
FOLLOWING INFORMATION:

- ✓ PART NUMBER
- ✓ DESCRIPTION
- ✓ MODEL NUMBER