

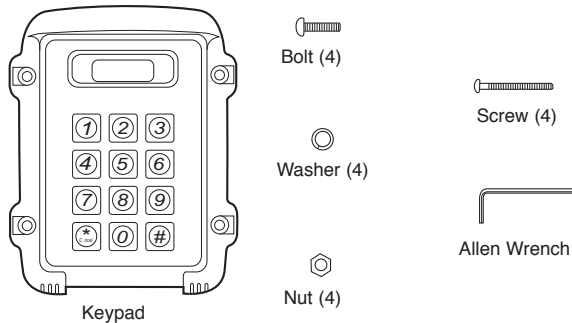
Overview

The Wireless Keypad uses a digitally secure intercom link that allows it to control one access point. The Wireless Keypad is compatible with various LiftMaster Wireless Products.

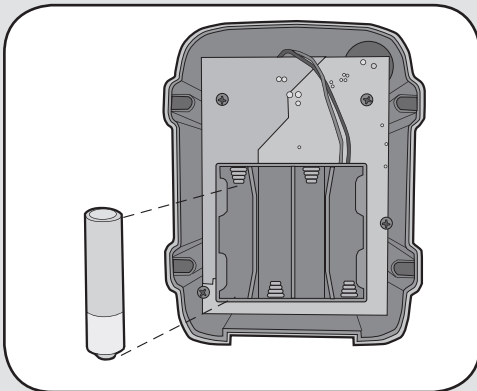
Model WKP5LM3 can hold up to 5 PIN Numbers.

Model WKP250LM3 can hold up to 250 PIN Numbers.

Carton Inventory



Assembly



Install 4 AA Alkaline batteries (not provided). (Lithium batteries recommended for colder environments.)

Keypad will beep.

Keypad will continuously beep indicating no Master PIN Number has been programmed. Proceed to *Initial Setup*.

Initial Setup

Step 1: On keypad press:

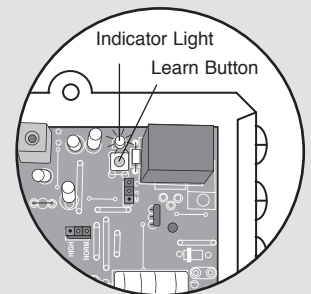
Step 2: Enter 4 digit Master PIN Number.
Example: 1234.



NOTE: “*” is the cancel button that will cancel any call or key sequence.

Program Pre-Installed LiftMaster Receiver

Step 1: Pry open the front panel of the receiver case with a coin or a screwdriver.



Step 2: Press and release the Learn button on the receiver. The Indicator Light will light for 30 seconds indicating that receiver is in Learn Mode.

Step 3: Within 30 seconds enter Master PIN Number on Keypad.

Step 4: Press “1”.

Erase All Control Codes

Press and hold the Learn button on the receiver until the Indicator Light turns off indicating that the receiver memory is clear (about 6 seconds).

Operation

To use Keypad, enter any valid PIN Number.

Change Master PIN Number

Enter existing Master PIN Number on Keypad:



“BEEP”



Enter new Master PIN Number:



“BEEP”

Adding PIN Numbers

The WKP5LM3 can support up to 5 PIN Numbers while the WKP250LM3 can support 250.

Enter Master PIN Number on Keypad:



“BEEP”

Enter new PIN Number:



“BEEP”

Erasing PIN Numbers

Enter Master PIN Number on Keypad:



“BEEP”

Enter PIN number you want to remove:



“BEEP” “BEEP”

A triple beep indicates a PIN Number has been entered that does not exist. The Master PIN Number cannot be deleted.

Temporary PIN Numbers

A temporary PIN Number can be used only once within a 24 hour period.

NOTE: The WKP5LM3 can hold up to 5 Temporary PIN Numbers while the WKP250LM3 can hold 15.

Enter Master PIN Number on Keypad:



“BEEP”

Enter temporary PIN Number:



“BEEP”

Keypad Brightness

When it is dark, the panel will light when it detects movement (up to 5') or when a button is pressed.

Enter Master PIN Number on Keypad:



Enter one of the following brightness levels:



“BEEP”

Default setting is 2.

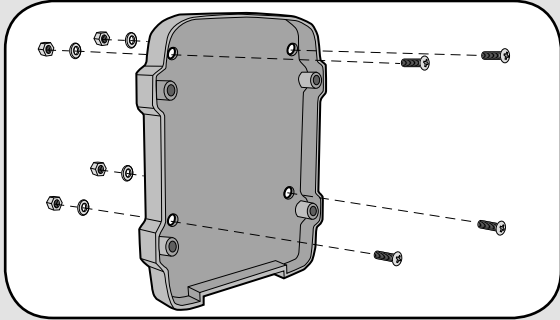
Battery

The AA batteries (not provided) in the Keypad will typically last up to 3 years depending on use. (Lithium batteries recommended for colder environments.)

Mount Keypad

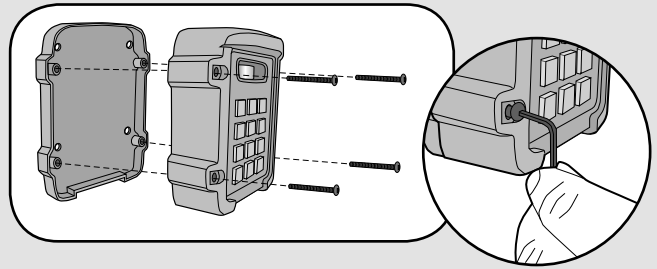
It is recommended that Keypad be mounted to a Gooseneck post or non-metallic surface. If it is necessary to mount Keypad to a metal surface, use a non-metallic spacer to move the Keypad away from the metal surface.

Step 1



Choose mounting location for Keypad. Remove the back panel and attach it to a solid surface or post.

Step 2



Mount the Keypad onto the back panel with screws. Tighten screws with Allen wrench.

One Year Limited Warranty

The Chamberlain Group, Inc. warrants to the first retail purchaser of this product that it is free from defect in materials and/or workmanship for a period of 1 year from the date of purchase.

NOTICE: To comply with FCC and or Industry Canada rules (IC), adjustment or modifications of this receiver and/or transmitter are prohibited, except for changing the code setting or replacing the battery. THERE ARE NO OTHER USER SERVICEABLE PARTS.
Tested to Comply with FCC Standards FOR HOME OR OFFICE USE. Operation is subject to the following two conditions: (1) this device may not cause harmful interference, and (2) this device must accept any interference received, including interference that may cause undesired operation.

HOW TO ORDER REPAIR PARTS

DEVANCO CANADA

19192 HAY ROAD, UNIT Q
SUMMERSTOWN, ON K0C 2E0

TOLL FREE: 855-931-3334
www.devancocanada.com

**WHEN ORDERING REPAIR PARTS
PLEASE SUPPLY THE FOLLOWING INFORMATION:**

- ✓ **PART NUMBER**
- ✓ **DESCRIPTION**
- ✓ **MODEL NUMBER**