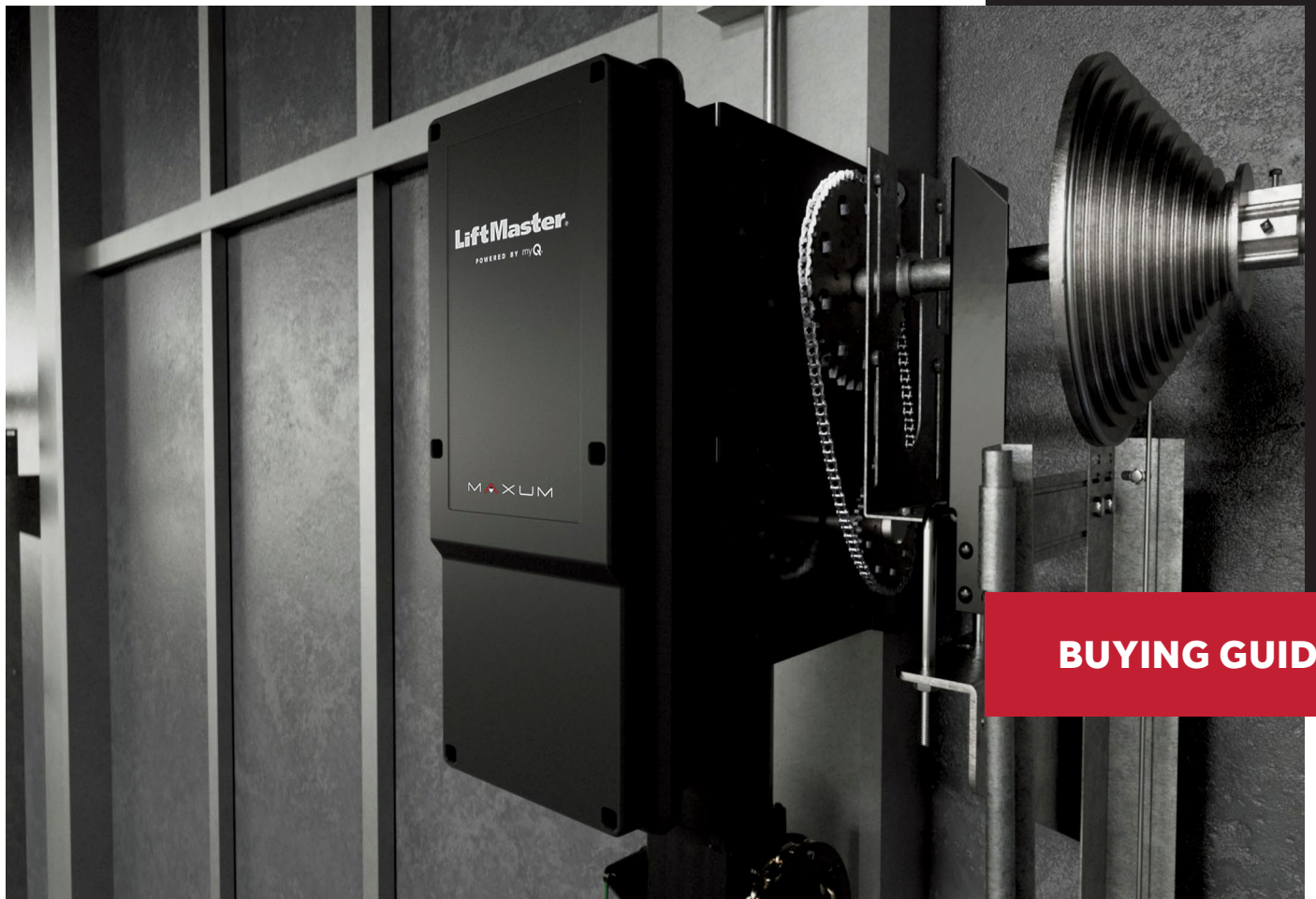


# The Next Generation

MAXUM Series Commercial Door Operators



**BUYING GUIDE**

**Fast. Smart. Simple.**

**LiftMaster**

POWERED BY myQ

For more information, please visit [www.devancocanada.com](http://www.devancocanada.com) or call toll free at 1-855-931-3334

# Introducing the new MAXUM Series

LiftMaster® is pioneering the next generation of innovation for commercial door operation. The MAXUM Series of DC commercial door operators are a state-of-the-art platform that introduce next-level versatility in a sleek, purpose-built design that's easier to install and service. With unrivaled performance and intelligence, the new lineup will help today's commercial facilities take the next step towards a smarter future.

Selecting the right DC commercial door operator involves considering various factors such as door type, door weight and usage frequency. To help ensure you are selecting the right operator for your application, the following pages provide a step-by-step guide to help you determine the appropriate DC commercial door operator for your facility.



Scan to learn more about  
MAXUM Commercial Door  
Operators.



## JDC Jackshaft

Next-generation standard duty Jackshaft (non-hoisted) DC operator supports sectional or rolling doors up to 700 lbs in NEMA 1 applications. Jackshaft operators are preferred over trolleys in applications where overhead space is at a premium. 4.5 Ah battery backup kit is included.



## JHDC Hoist

Next-generation standard or extended duty Jackshaft (hoisted) DC operator supports sectional or rolling doors that weigh up to 2200 lbs in NEMA 1 or NEMA 4X applications. JHDC operators include a hand chain (hoist) for manual door movement. Battery backup capable.



## TDC Trolley

Next-generation standard or extended duty TDC operator supports standard-lift sectional doors up to 2200 lbs in NEMA 1 or NEMA 4X applications. Battery backup capable.



# NEW Partner Portal simplifies ordering

With the debut of the new MAXUM Series of operators, LiftMaster has also introduced an enhanced ordering process that allows you to simply order what you need à la carte. The new Partner Portal not only guides you to the operator that fits your application needs, but it also recommends all the installation components and accessories that are needed for your specific installation, all without you having to know the product numbers. Recommended accessories can be ordered with an operator or placed as a separate stocking order as needed.

## Ordering is as easy as 1, 2, 3

Embracing a new approach to ordering an operator on the Partner Portal has never been easier. This guide provides a simple, 3-step process for ordering the new DC commercial door operators and accessories based on door specifications, voltage and usage.

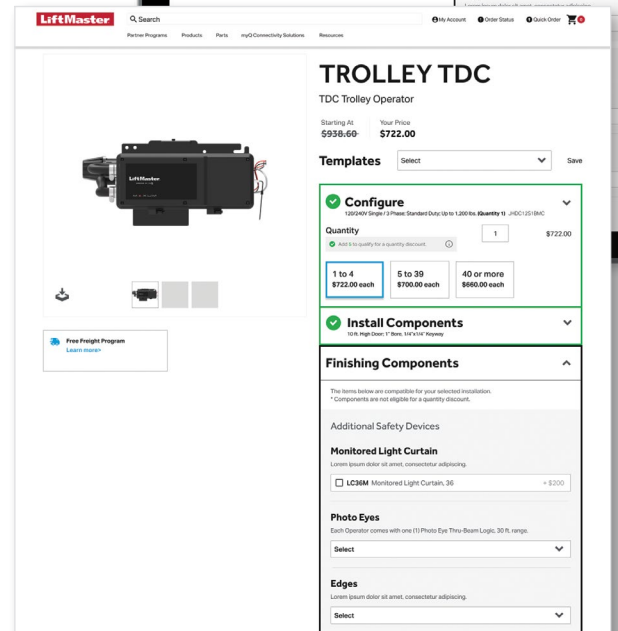
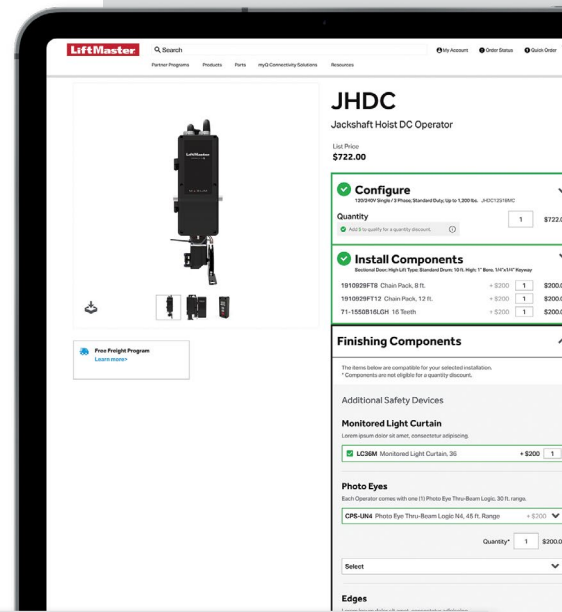
This guide walks you through the Partner Portal's new 3-step ordering process:

**Step 1.** Select and configure an operator

**Step 2.** Select required installation components\*

**Step 3.** Select additional accessories and field install kits to improve your operator's installation and functionality

\*These vary by operator and application but will be automatically selected for you.



# Step 1 Select and configure an operator

Configure your choice of MAXUM DC operator in a step-by-step process based on door weight and type, installation voltage/phase and number of daily door cycles. With a trimmed down lineup of just 26 operators, the process of ordering and stocking has been significantly simplified.

All operators, JDC, JHDC and TDC, come standard with a monitored entrapment protection device.

All units will include the CPS-U and NEMA 4X units will include the CPS-UN4. These entrapment protection devices are packed in and cannot be swapped out. If additional entrapment devices are needed, they can be ordered/added as an additional accessory in Step 3 of the ordering process.

## JDC Jackshaft Operator

| Model     | Max Door Weight | Voltage/Phase             | Equivalent Horsepower | NEMA 4X | Cycles Per Day                      | Launch Phase |
|-----------|-----------------|---------------------------|-----------------------|---------|-------------------------------------|--------------|
| JDC7S1BMC | 700 lbs.        | 120Vac 1 PH/240Vac 1/3PH* | 1/2 HP                | -       | Standard Duty up to 90 Cycles a Day | 1            |
| JDC7S4BMC | 700 lbs.        | 480Vac 3PH                | 1/2 HP                | -       | Standard Duty up to 90 Cycles a Day | 1            |

**NOTE:** 4.5 Ah Battery Backup is included as standard for the JDC family.

\*Convertible to 208Vac 3PH or 600Vac 3PH via transformer, ordered separately.

## JHDC Hoist Operators

| Model         | Max Door Weight | Voltage/Phase             | Equivalent Horsepower | NEMA 4X | Cycles Per Day                         | Launch Phase |
|---------------|-----------------|---------------------------|-----------------------|---------|--|--------------|
| JHDC7S1BMC    | 700 lbs.        | 120Vac 1 PH/240Vac 1/3PH* | 1/2 HP                | -       | Standard Duty up to 90 Cycles a Day    | 1            |
| JHDC7S4BMC    | 700 lbs.        | 480Vac 3PH                | 1/2 HP                | -       | Standard Duty up to 90 Cycles a Day    | 1            |
| JHDC12S1BMC   | 1200 lbs.       | 120Vac 1 PH/240Vac 1/3PH* | 3/4 HP                | -       | Standard Duty up to 90 Cycles a Day    | 1            |
| JHDC12S4BMC   | 1200 lbs.       | 480Vac 3PH                | 3/4 HP                | -       | Standard Duty up to 90 Cycles a Day    | 1            |
| JHDC12X1BMC   | 1200 lbs.       | 120Vac 1 PH/240Vac 1/3PH* | 3/4 HP                | -       | Extended Duty** up to 150 Cycles a Day | 1            |
| JHDC12X4BMC   | 1200 lbs.       | 480Vac 3PH                | 3/4 HP                | -       | Extended Duty** up to 150 Cycles a Day | 1            |
| JHDC22X1BMC   | 2200 lbs.       | 120Vac 1 PH/240Vac 1/3PH* | 1 and 1.5 HP          | -       | Extended Duty** up to 150 Cycles a Day | 2            |
| JHDC22X4BMC   | 2200 lbs.       | 480Vac 3PH                | 1 and 1.5 HP          | -       | Extended Duty** up to 150 Cycles a Day | 2            |
| JHDC12X1N4XMC | 1200 lbs.       | 120Vac 1 PH/240Vac 1/3PH* | 3/4 HP                | Yes     | Extended Duty** up to 150 Cycles a Day | 3            |
| JHDC12X4N4XMC | 1200 lbs.       | 480Vac 3PH                | 3/4 HP                | Yes     | Extended Duty** up to 150 Cycles a Day | 3            |
| JHDC22X1N4XMC | 2200 lbs.       | 120Vac 1 PH/240Vac 1/3PH* | 1 and 1.5 HP          | Yes     | Extended Duty** up to 150 Cycles a Day | 3            |
| JHDC22X4N4XMC | 2200 lbs.       | 480Vac 3PH                | 1 and 1.5 HP          | Yes     | Extended Duty** up to 150 Cycles a Day | 3            |

**NOTE:** Phase 1 is Q1 of 2024, Phase 2 is Q3 of 2024 and Phase 3 is Q1 of 2025. JDC and JHDC maximum door height is up to 40 ft. with up to a 10 ft. high lift.

\*Convertible to 208Vac 3PH or 600Vac 3PH via transformer, ordered separately.

\*\*Extended Duty is formerly known as Heavy Industrial Duty or Gear Head.



### TDC Trolley Operators

| Model        | Max Door Weight | Voltage/Phase             | Equivalent Horsepower | NEMA 4X | Extended Duty                          | Launch Phase |
|--------------|-----------------|---------------------------|-----------------------|---------|--|--------------|
| TDC7S1BMC    | 700 lbs.        | 120Vac 1 PH/240Vac 1/3PH* | 1/2 HP                | -       | Standard Duty up to 90 Cycles a Day    | 1            |
| TDC7S4BMC    | 700 lbs.        | 480Vac 3PH                | 1/2 HP                | -       | Standard Duty up to 90 Cycles a Day    | 1            |
| TDC12S1BMC   | 1200 lbs.       | 120Vac 1 PH/240Vac 1/3PH* | 3/4 HP                | -       | Standard Duty up to 90 Cycles a Day    | 1            |
| TDC12S4BMC   | 1200 lbs.       | 480Vac 3PH                | 3/4 HP                | -       | Standard Duty up to 90 Cycles a Day    | 1            |
| TDC12X1BMC   | 1200 lbs.       | 120Vac 1 PH/240Vac 1/3PH* | 3/4 HP                | -       | Extended Duty** up to 150 Cycles a Day | 1            |
| TDC12X4BMC   | 1200 lbs.       | 480Vac 3PH                | 3/4 HP                | -       | Extended Duty** up to 150 Cycles a Day | 1            |
| TDC22X1BMC   | 2200 lbs.       | 120Vac 1 PH/240Vac 1/3PH* | 1 and 1.5 HP          | -       | Extended Duty** up to 150 Cycles a Day | 2            |
| TDC22X4BMC   | 2200 lbs.       | 480Vac 3PH                | 1 and 1.5 HP          | -       | Extended Duty** up to 150 Cycles a Day | 2            |
| TDC12X1N4XMC | 1200 lbs.       | 120Vac 1 PH/240Vac 1/3PH* | 3/4 HP                | Yes     | Extended Duty** up to 150 Cycles a Day | 3            |
| TDC12X4N4XMC | 1200 lbs.       | 480Vac 3PH                | 3/4 HP                | Yes     | Extended Duty** up to 150 Cycles a Day | 3            |
| TDC22X1N4XMC | 2200 lbs.       | 120Vac 1 PH/240Vac 1/3PH* | 1 and 1.5 HP          | Yes     | Extended Duty** up to 150 Cycles a Day | 3            |
| TDC22X4N4XMC | 2200 lbs.       | 480Vac 3PH                | 1/2 HP                | Yes     | Extended Duty** up to 150 Cycles a Day | 3            |

**NOTE:** Phase 1 is Q1 of 2024, Phase 2 is Q3 of 2024 and Phase 3 is Q1 of 2025.

TDC maximum door height is up to 24 feet.

\*Convertible to 208Vac 3PH or 600Vac 3PH via transformer, ordered separately.

\*\*Extended Duty is formerly known as Heavy Industrial Duty or Gear Head.

## Step 2 Select required install components

Accessories and install kits are essential in ensuring both seamless and efficient operation of your MAXUM operator. The Partner Portal will automatically select the required installation components based on your selected operator and application, providing a smooth operation that prioritizes safety.

JHDC units come standard with 25 feet of hoist chain, which is enough for 16 feet of total height. For doors above 16 feet of total height, additional 25-foot chain packs can be ordered.

### Additional hoist chain for JHDC units on oversized doors

Determine total hoist chain needed by adding any extra high lift to door height. Doors over 16ft in height will need extra hoist chain, as well as sectional doors with high lift that when added exceed 16 ft of total height.

### Required sprocket for JDC and JHDC operators

A sprocket is required for installation of each JDC and JHDC operator. See sprocket table below for suggested sprocket selection to safely achieve recommended door speed.

| Amount of additional hoist chain needed for JHDC units on taller doors. Model 1910929FT25 |  |
|---|--|
| Total Height (ft.)  | Chain packs now come in 25ft, additional chain packs needed: |
| 0 - 16  | 0  |
| 17 - 29   | 1  |
| 30 - 41   | 2  |
| 42 - 50   | 3  |

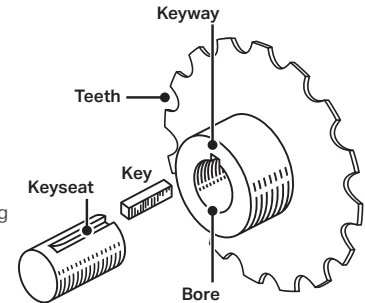
**NOTE:** Additional Hoist Chain will be auto-calculated in the Partner Portal based on door height and any extra high lift or vertical lift provided.

### Bore and Keyway Description

**Tooth Count:** Sprocket tooth count is recommended to optimize the speed of the doors at 12" per second (on sectional doors).

**Keyway:** Slot machined in the bore and shaft that holds the key, ensuring proper torque transmission.

**Bore:** Center hole of sprocket—must match in diameter with shaft.



### REQUIRED Sprocket selection for JDC or JHDC operators only

| Sprocket with Key Kits (For #50 Chain), needed for JDC and JHDC |                                    |             |                            |                               |                            |                               |
|---|------------------------------------|-------------|----------------------------|-------------------------------|----------------------------|-------------------------------|
| Weight Characteristic of Door                                   | Door Type                          | Tooth Count | 1 in. Bore, 1/4 in. Keyway | 1.25 in. Bore, 1/4 in. Keyway | 1 in. Bore, 3/8 in. Keyway | 1.25 in. Bore, 3/8 in. Keyway |
| 700   | Sectional                          | 16          | 71-1550B16LGH              | 71-1550B16QGH                 |                            |                               |
| 1200  | Sectional                          | 22          | 71-1550B22LGH              | 71-1550B22QGH                 |                            |                               |
| 2200  | Sectional                          | 32          | 71-1550B32LGH              | 71-1550B32QGH                 |                            |                               |
| 700   | Rolling, Uninsulated               | 50          | 71-1550B50LGH              | 71-1550B50QGH                 | 71-1550B50LKH              | 71-1550B50QKH                 |
| 700   | Rolling, Insulated                 | 60          | 71-1550B60LGH              | 71-1550B60QGH                 | 71-1550B60LKH              | 71-1550B60QKH                 |
| 1200  | Rolling, Insulated and Uninsulated | 72          | 71-1550B72LGH              | 71-1550B72QGH                 | 71-1550B72LKH              | 71-1550B72QKH                 |
| 2200  | Rolling, Insulated and Uninsulated | 82          | 71-1550B82LGH              | 71-1550B82QGH                 | 71-1550B82LKH              | 71-1550B82QKH                 |

**NOTE:** 3/8 in. keyway options are only available for rolling door applications.



**Track and chain kit selection for TDC Operators**

Determine the right track and chain kit for your TDC operators by measuring your door's height, from bottom to top.



**REQUIRED Track and chain kit selection for TDC operators only**

1 kit (which consists of 2 tracks, 1 chain, and any needed spacers) is required for installation of each operator, order using the kits listed below.

| Track and Chain Kits, needed for TDC |             |                    |
|--------------------------------------|-------------|--------------------|
| Operator Size                        | Door Height | TDC Components Kit |
| TDC7 Operators                       | 8           | TDC7-8             |
| TDC7 Operators                       | 10          | TDC7-10            |
| TDC7 Operators                       | 12          | TDC7-12            |
| TDC7 Operators                       | 14          | TDC7-14            |
| TDC7 Operators                       | 16          | TDC7-16            |
| TDC7 Operators                       | 18          | TDC7-18            |
| TDC7 Operators                       | 20          | TDC7-20            |
| TDC7 Operators                       | 22          | TDC7-22            |
| TDC7 Operators                       | 24          | TDC7-24            |
| TDC12 & TDC22 Operators              | 8           | TDC1222-8          |
| TDC12 & TDC22 Operators              | 10          | TDC1222-10         |
| TDC12 & TDC22 Operators              | 12          | TDC1222-12         |
| TDC12 & TDC22 Operators              | 14          | TDC1222-14         |
| TDC12 & TDC22 Operators              | 16          | TDC1222-16         |
| TDC12 & TDC22 Operators              | 18          | TDC1222-18         |
| TDC12 & TDC22 Operators              | 20          | TDC1222-20         |
| TDC12 & TDC22 Operators              | 22          | TDC1222-22         |
| TDC12 & TDC22 Operators              | 24          | TDC1222-24         |

**NOTE:** Track and chain will be auto-calculated on the Partner Portal at time of order based on door height and type.

Kits for TDC7 operators include #48 chain; kits for TDC12 and TDC22 operators include #41 chain.

## Step 3 Select accessories and field kits

### Enhance operator functionality and installation with accessories and field kits

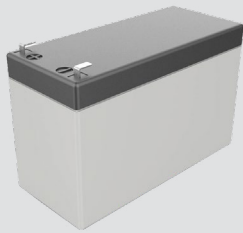
LiftMaster has added many features to the new MAXUM series that come standard with the operator. For those not included, field installable kits are offered to easily replace current modifications. These kits can be kept on your shelves if needed in a pinch, are easy to install, and reduce the timing to receive modified units.

Safety is a number one priority for commercial door operators. LiftMaster offers a full line of entrapment protection devices for all of your application needs, including new through beam, retro reflective and wireless edge kits.

View the full list of accessories and field kits on the Partner Portal.







**7 Ah Battery Backup Kit**

DC Battery Backup Kit includes two (2) 7 Ah batteries, battery enclosure and connectors.

DC7AH



**208V and 600V Transformer Voltage Kits**

External transformer kits for converting 120/240V operators to 208V or 600V operator type.

XF208VAC7, XF208VAC12, XF208VAC22, XF600VAC7, XF600VAC12, XF600VAC22



**Monitored Wireless Edge Kit**

New for commercial door operators, monitored wireless edge kit stops and/or reverses a moving door when sensing a pathway obstruction.

LMWEKITU



**Hi-Intensity Red/Green Traffic Light**

IP65/NEMA4 all-weather enclosure is an ideal solution for fire stations, auto sales and service centers, municipalities, and parking facilities

RGL-CTL



**Auxiliary Relay Board**

Use for switching on/off auxiliary devices such as lights, bells, horns, strobes and other warning devices. Board mounts inside the operator cover for easy installation.

AUXREL



**3-Button Remote Control**

Controls up to three door operators with extended range with Security+2.0®.

893LMMC

**Single Button Programmable DIP Remote**

811LMX



**36 in. Monitored Light Curtain**

Provides up to 33 ft. of protection range and a minimum of 36 in. of height coverage to keep your equipment safe.

LC36M



**Loop Detector Board**

Accessory board to plug-in Loop Detector (LOOPDETLM) Board mounts inside the operator cover for easy installation.

LPEXP

## Step 3 Select accessories and field kits (continued)

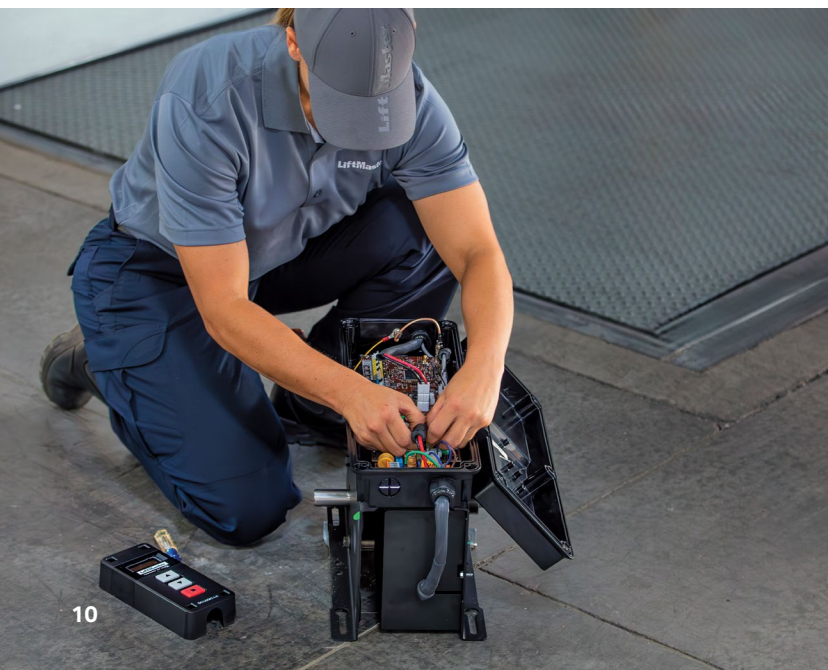
### Trolley field install kits

Adding a trolley field install kit to a standard JDC, JHDC or TDC operator can provide extra support and stability for wider and heavier commercial door applications. These added setups will help to improve the overall performance and reliability of the commercial door operator.



| Door Height | Auxiliary Trolley |                      | Dual Auxiliary Trolley |                    |                    |
|-------------|-------------------|----------------------|------------------------|--------------------|--------------------|
|             | JDC/JHDC 700      | JDC/JHDC 1200 & 2200 | JDC/JHDC 700           | JDC/JHDC 1200      | JDC/JHDC 2200      |
| 8 ft.       | 7AUXTROLLEY08     | 1222AUXTROLLEY08     | 7DUALAUXTROLLEY08      | 12DUALAUXTROLLEY08 | 22DUALAUXTROLLEY08 |
| 10 ft.      | 7AUXTROLLEY10     | 1222AUXTROLLEY10     | 7DUALAUXTROLLEY10      | 12DUALAUXTROLLEY10 | 22DUALAUXTROLLEY10 |
| 12 ft.      | 7AUXTROLLEY12     | 1222AUXTROLLEY12     | 7DUALAUXTROLLEY12      | 12DUALAUXTROLLEY12 | 22DUALAUXTROLLEY12 |
| 14 ft.      | 7AUXTROLLEY14     | 1222AUXTROLLEY14     | 7DUALAUXTROLLEY14      | 12DUALAUXTROLLEY14 | 22DUALAUXTROLLEY14 |
| 16 ft.      | 7AUXTROLLEY16     | 1222AUXTROLLEY16     | 7DUALAUXTROLLEY16      | 12DUALAUXTROLLEY16 | 22DUALAUXTROLLEY16 |
| 18 ft.      | 7AUXTROLLEY18     | 1222AUXTROLLEY18     | 7DUALAUXTROLLEY18      | 12DUALAUXTROLLEY18 | 22DUALAUXTROLLEY18 |
| 20 ft.      | 7AUXTROLLEY20     | 1222AUXTROLLEY20     | 7DUALAUXTROLLEY20      | 12DUALAUXTROLLEY20 | 22DUALAUXTROLLEY20 |
| 22 ft.      | 7AUXTROLLEY22     | 1222AUXTROLLEY22     | 7DUALAUXTROLLEY22      | 12DUALAUXTROLLEY22 | 22DUALAUXTROLLEY22 |
| 24 ft.      | 7AUXTROLLEY24     | 1222AUXTROLLEY24     | 7DUALAUXTROLLEY24      | 12DUALAUXTROLLEY24 | 22DUALAUXTROLLEY24 |

\*Auxiliary and Dual Auxiliary Trolley Kits for doors larger than 24 ft. doors may be available. Please contact LiftMaster Customer Support.

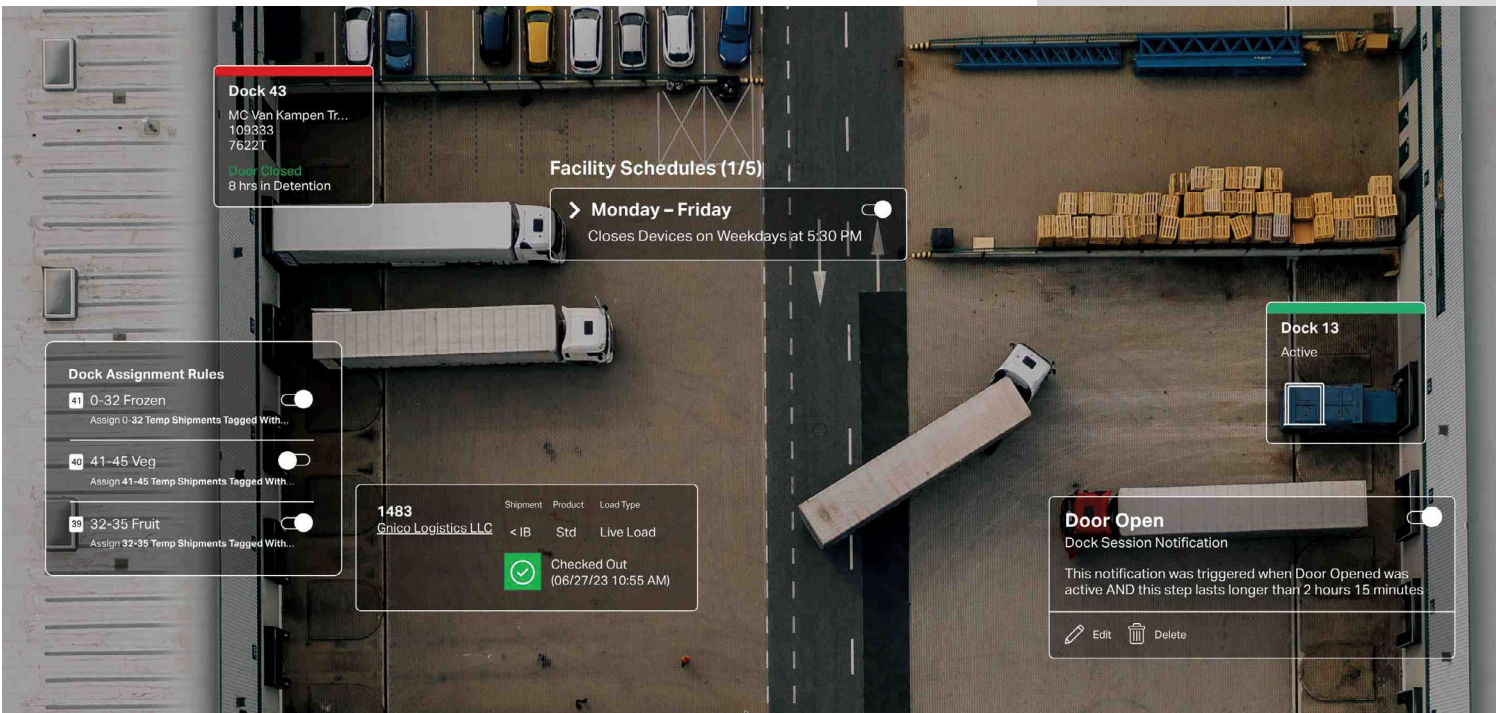
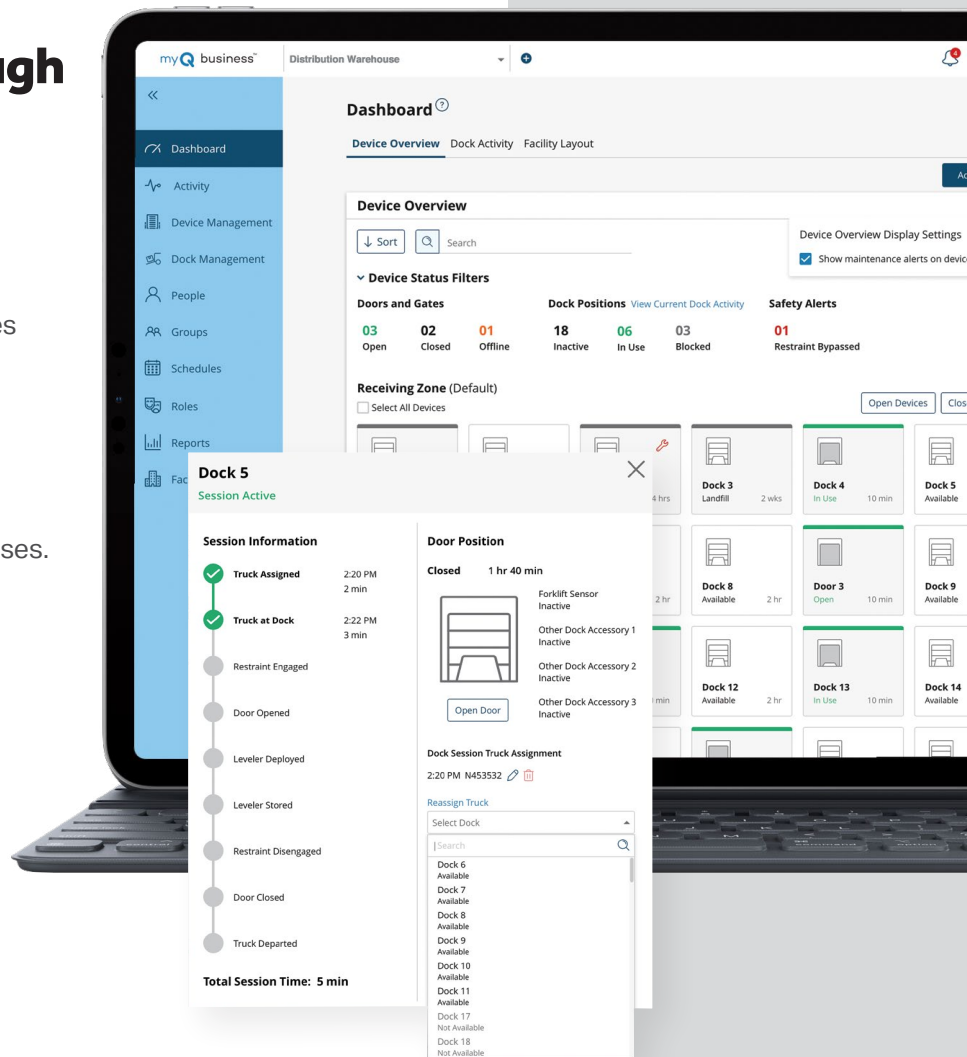


| Door Height | Dual Trolley   |                   |
|-------------|----------------|-------------------|
|             | TDC 700        | TDC 1200 & 2200   |
| 8 ft.       | 7DUALTROLLEY08 | 1222DUALTROLLEY08 |
| 10 ft.      | 7DUALTROLLEY10 | 1222DUALTROLLEY10 |
| 12 ft.      | 7DUALTROLLEY12 | 1222DUALTROLLEY12 |
| 14 ft.      | 7DUALTROLLEY14 | 1222DUALTROLLEY14 |
| 16 ft.      | 7DUALTROLLEY16 | 1222DUALTROLLEY16 |
| 18 ft.      | 7DUALTROLLEY18 | 1222DUALTROLLEY18 |
| 20 ft.      | 7DUALTROLLEY20 | 1222DUALTROLLEY20 |
| 22 ft.      | 7DUALTROLLEY22 | 1222DUALTROLLEY22 |
| 24 ft.      | 7DUALTROLLEY24 | 1222DUALTROLLEY24 |

# Added efficiency through Wi-Fi Connectivity

Your operator now comes with Wi-Fi® as a standard feature. Connecting to Wi-Fi enables free product enhancements and automatic firmware updates. Wi-Fi also gives you access to myQ Facility, a cloud-based solution that provides a powerful suite of software services, which delivers real-time data and analytics about your facility to your phone. Stay up-to-date and in control, increasing productivity and reducing expenses. Additionally, myQ Enterprise provides a one-stop gate-to-dock performance upgrade that automates and optimizes operations across your facility's inbound and outbound logistics, improving the management, visibility, safety and security of your facility.

For more details on myQ and Wi-Fi connectivity, go to [myQ.com/facility](http://myQ.com/facility).



**For more information, please visit [www.devancocanada.com](http://www.devancocanada.com) or call toll free at 1-855-931-3334**