

# SensingEdge

## Applications

- **Barrier Gates**
- **Counter Shutters**

## About the ME111...

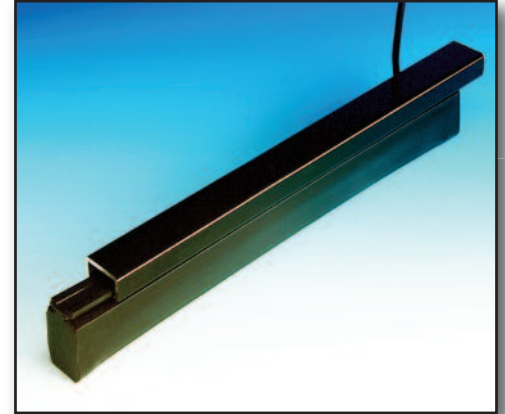
This pressure sensitive electric edge can be adapted to suit a wide variety of applications. It is manufactured to user specifications for length, sensitivity and outlet location. When touch activated, the ME111 sends an immediate signal to stop and/or reverse operations depending upon your particular application. Multiple mounting channel designs allow for easy installation on nearly any surface.

## OPTIONS:

- 4 Wire self monitoring
- Soft Ends
- Coil Cord attached
- 4 wire intrinsically safe controller (FSIS-25-4)
- Pneumatic (MEP111) Air-Wave (MAW111)
- Mounting Channels

## TECHNICAL SPECIFICATIONS:

Color:	Black
Length:	per specification to nearest 1/4"
Max. Length	up to 10 feet.
Lead Wire:	AWM, 22 gauge, 2ft. length
Sensitivity:	nominal 4-7 lbf
Electrical Diagram:	2 wire N.O. configuration
Electrical Maximum:	24 volt AC or DC, 1/2 amp
Mechanical Diagram:	See drawings on reverse side
Contact Element:	Alumaglas®
Materials:	Flexible PVC
Channel:	Extruded PVC or Aluminum
Temperature Range:	-30°F to +155°F
Wire Outlet Location:	Right side, Left side or end



## FUNCTIONAL BENEFITS:

- Touch Sensitive Signalling
- Small Profile
- Easy to Install
- Mounts Vertically or Horizontally
- ANSI/UL325 Recognized Component



For more information, please visit [www.devancocanada.com](http://www.devancocanada.com)  
or call toll free at 855-931-3334

**Model # ME111**

# **SensingEdges**

**Installation:**

Place appropriate ME111 mounting channel in desired location. Drill 1/8" holes through channel and into mounting surface every 24". Attach channel to surface with screws. Slide ME111 Sensing Edge into channel and wire to controls.

*Note:* For safe operation, use a maximum 24 volt, 1/2 amp AC/DC power. Overload can cause damage. For detailed installation instructions contact, Miller Edge, Inc.

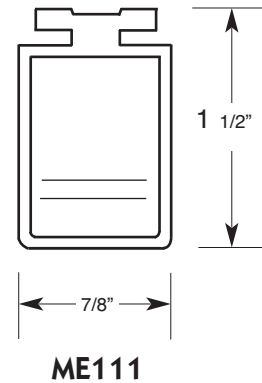
**Care of the ME111. . .**

Minimal care is required for the ME111 since it is manufactured with only the most durable materials and the highest quality control standards. However, Sensing Edges should be examined regularly for cuts or punctures which could damage internal components. Check wiring to be sure connections are secure. When properly maintained, the ME111 offers years of trouble free operations.

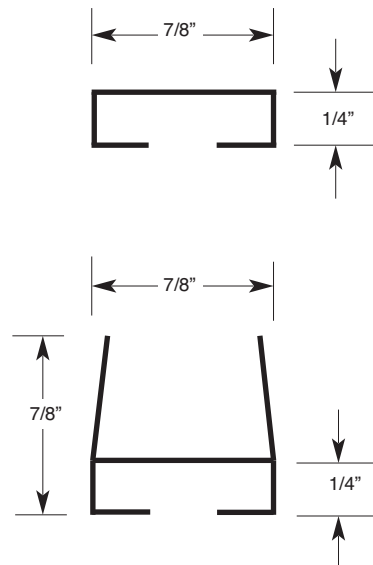
**Warranty**

We will replace within one year of shipment from our factory, any Sensing Edge subject to normal use which is found to have defective materials or workmanship, as determined solely by our factory representative. Replacements will be shipped to you freight collect. This warranty is void where evidence of misuse or abuse is present.

**Mechanical Diagrams:**



**Mounting Channels:**



U.S. Patent #5,962,825 & #8,832,996 B2 CAN. Patent #2,008,021

ME111\_Spec\_20150220

**For more information, please visit [www.devancocanada.com](http://www.devancocanada.com)  
or call toll free at 855-931-3334**