

Operational Check

After installing your receiver and transmitter, check the operation of your radio controls by moving approximately 45 feet back from the garage door, then press the transmitter button. Operation at this distance should be reliable. However, environmental conditions and the location of the transmitter and receiver will affect distance.

- If the receiver is in the proximity of a metal beam or other obstruction it may be necessary to relocate the receiver to increase the operating range.
- If multiple receivers are mounted closer than 15 feet, blocking and interference may occur. Move the receivers further apart.
- If the receiver does not work at any distance, check that the receiver terminals are connected to the proper operator terminals.
- If the HomeLink® transmitter does not activate the operator or distance is inadequate, verify proper operation using the hand-held transmitter. Contact your HomeLink® system provider for help with configuring the HomeLink® transmitter and to resolve distance problems when using the HomeLink® system.
- If the transmitter doesn't activate the operator check the coding on both the transmitter and receiver. The code setting must match **exactly**. This may necessitate a reprogramming of the transmitter and receiver.
- If the distance is inadequate check the battery and replace if necessary.
- To maximize the operating distance move the transmitter to different locations in the car until a satisfactory distance is achieved. Vanity mirrors on sun visors will affect performance.

LINEAR LIMITED WARRANTY

This product is warranted to the consumer against defects in material and workmanship for one year from the date of purchase. This warranty applies to first retail buyers of new devices. Warrantor will repair, or at its option, replace, any device it finds that requires service under this warranty, and will return the repaired or replaced device to the consumer at the warrantor's cost. For warrant service and shipping instructions contact warrantor at the address shown below. Devices must be sent to warrantor for service at owner's expense. The remedies provided by this warranty are exclusive. Implied warranties under state law are to the one year period of this written warranty. Some states do not allow limitations on how long an implied warranty lasts, so the above limitation may not apply to you. In order to be protected by this warranty, save your proof of purchase and send copy with equipment should repair be required. This warranty gives you specific legal rights, and you may also have other rights which vary from state to state.

For warranty service and shipping instructions contact Linear at the phone number shown below. In order to be protected by this warranty, save your proof of purchase and send a copy with equipment should repair be required. All products returned for warranty service require a Return Product Authorization Number (RPA#). Contact Linear Technical Services at 1-800-421-1587 for an RPA# and other important details.

WARNING

Unexpected door operations can cause personal injury or property damage.

This device complies with Part 15 of the FCC Rules and with RSS-210 of Industry Canada. Operation is subject to the following two conditions: (1) This device may not cause harmful interference, and (2) this device must accept any interference received, including interference that may cause undesired operation.



P/N 190-111676 REV B

Linear®

Building On Innovation.

For more information:
www.devancocanada.com
 or call toll free at 855-931-3334

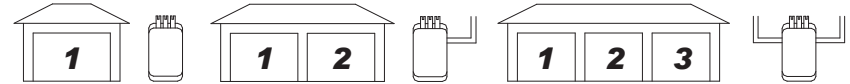
Garage Door and Gate Operator Radio Controls MVP Receiver and Transmitters

Product Features

These controls are designed to remotely operate garage door and gate openers. The MVP receiver is compatible with Classic, MVP and Original Allstar, Allister and Pulsar type dip-switch transmitters. The MVP receiver is available in one and three-door versions and may be used as shown below. The radio frequency of the remote controls is fixed and tuned at the factory. RF adjustments are not required and should not be attempted by the end user. There are no user serviceable parts in the radio controls.

Receiver Installation

First, determine the type of operator (with or without receiver power). Refer to the operator manual or contact the operator manufacturer as needed. Next, attach the receiver to the operator according to the appropriate installation instructions. For two and three door installations connect the wire leads from the receiver to the second or second and third operator. Next, set the transmitter codes according to the instructions provided with the transmitter. To finish, program the receiver with the transmitter codes.



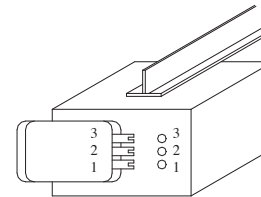
One-Door Installation

Two-Door Installation

Three-Door Installation

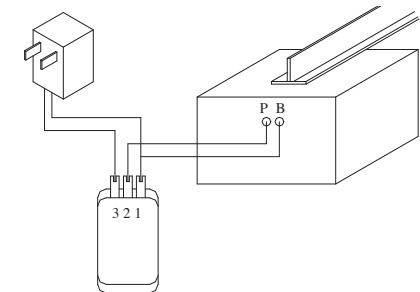
Installation on Operators that Provide Power for Receivers

Some operators can provide power for an external receiver. Disconnect power to the operator before installing receiver. Connect terminals 1, 2 & 3 of the receiver to terminals 1, 2 & 3 on the operator.



Installation on Operator Without Power for Receivers

Some operators do not provide power for an external receiver. An optional transformer and wire kit is required. Disconnect power to the operator before installing receiver. Connect terminals 1 & 3 of the receiver to the transformer. Connect terminals 1 & 2 on the receiver to terminals P & B on the operator.



Two and Three Door Installations

The receiver is installed on the left side of a two-door and in the center of a three-door (outside facing into the garage). Connect the receiver per instructions above (operators with or without receiver power). The additional wire leads are connected to terminals 1 & 2 or P & B of the second or second & third operator.

WARNING

Disconnect power to operator before any installation or repair. Follow all instructions provided by the manufacturer of your operator.



MVP Radio Controls are compatible with HomeLink®. HomeLink® is a registered trade mark of Johnson Controls, Inc.

Programming Quik-Code Transmitters

Programming the Classic or MVP Quik-Code transmitter is done as follows:

1. Put the transmitter in program mode.
 2. Select the button you wish to use.
 3. Enter your 9 digit code.
- After your code is confirmed, repeat the procedure for the remaining buttons.

Put the Transmitter in Program Mode

Step 1: First, press and hold the + button. The Red LED will turn on. Next, while continuing to hold the + button, press and hold the - button. Continue to hold both buttons until the LED starts to blink (approximately 5 seconds). **Release both buttons while the LED is blinking.** The LED will blink two times and then remain on to confirm you are in programming mode.

Select the Button You Wish to Use

Step 2: While the LED is on, press the button you wish to use. The LED will blink off once and then remain on.

ENTER YOUR 9 DIGIT CODE

Step 3: Enter the 9-digit code from the table by pressing the buttons that correspond with the entries in the table.

CONFIRM ENTRY

After the 9-digit code is entered, the LED will blink twice to confirm a valid code and remain off.

PROGRAM REMAINING BUTTONS

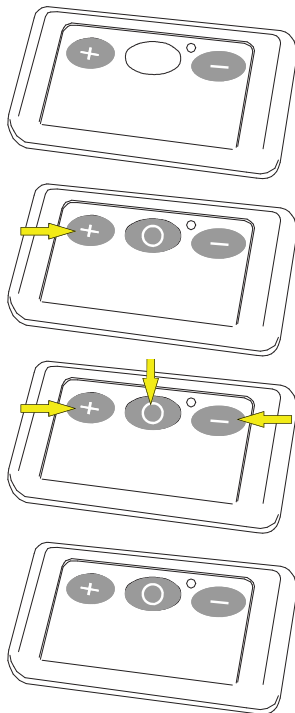
Repeat the procedure for the remaining buttons.

Express Coding

Express coding will program all 3 buttons at one time. To use Express Code to program all the buttons at the same time select the "+" button in Step 2 and end the 9 digit code entry in Step 3 with a "+". This will code all three buttons in one programming step.

NOTE: The table below has a row for each one of the three buttons on the Quik-Code transmitter since it is possible to set a unique code for each button.

	1	2	3	4	5	6	7	8	9
+									
0									
-									



**If the LED goes out the programming mode has timed out and you will need to start over.*

Programming Original Dip-Switch Transmitters

The coding switch in these products consist of nine or eight small switches, each of which can be placed in a different position. Use a small screwdriver to set the switches to a new positions.

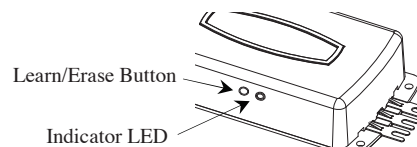
NOTE: Change switch settings from factory settings.



Keep transmitters and remote controls out of the reach of children. Do not let children play with or use the transmitter or remote controls. Unexpected door operations can cause personal injury or property damage. Do not place transmitter where the buttons can be accidentally or unintentionally activated.

Learning Transmitter Codes

The MVP receiver is capable of learning up to 8 different transmitter codes. The transmitters may be any combination of MVP, Classic or Original dip-switch type transmitters.



Programming One Door Receivers

Step 1: Momentarily press and release the Learn button. The LED will turn on.

Step 2: Using a programmed transmitter, press the desired transmitter button. When the receiver learns the transmitter code, the LED will turn off.

Step 3: Repeat to add additional transmitters with different codes.

Note: When using two or three-button transmitters, the button used in step 3 will activate the receiver.

Three Door Receivers

NOTE: When using MVP or Classic transmitters, use the Express-Code method for the MVP or Classic transmitters.

Step 1: Momentarily press and release the Learn button. The LED will turn on.

Step 2: Press any one of the transmitters buttons. When the receiver learns the transmitter code, the LED will turn off.

Step 3: Repeat to add additional transmitters with different codes.

Note: When using a one button 9931 type transmitter the transmitter will activate the door based on the last digit of the code. If the last digit of the code is a +, door 1 will be activated. If the last digit of the code is a 0, door 2 will be activated. If the last digit of the code is a -, door 3 will be activated.

When using two button 8832 type transmitters, the left button will activate door 1 and the right button will activate door 2.

When using a three button 8833 type or Classic transmitter, the left button will activate door 1, the middle button will activate door 2 and the right button will activate door 3.

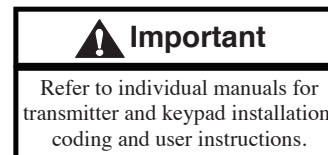


Radio Controls are prohibited from providing constant contact closure when installed on the push button inputs of residential garage door openers that are provided with monitored safety systems.

Erasing the Receiver's Memory

Step 1: Press and HOLD the Learn button. The indicator LED will turn on.

Step 2: When the LED turns off (after approximately 5 seconds), release the Learn button.



Programming the MVP Wireless Keyless Entry

When set to learn mode, the receiver memorizes a PIN and door number entered from the keypad. Once learned, this PIN and door number combination activates the receiver.

Step 1: The red Keypad lighting should be Off. If it is on, wait until it turns off (approximately 20 seconds).

Step 2: Momentarily press and release the Learn button. The LED will turn on. You have approximately 20 seconds to enter the keypad PIN and door code.

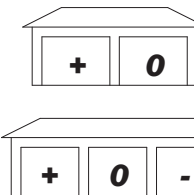
Step 3: Press ON/RESET to turn on the keypad. The red lighting on the keypad will turn on.

Step 4: Enter your Four Digit PIN. Every time you press a key the keypad lighting system will blink off and on to verify a key has been pressed.

Step 5: Press the * key.

Step 6: Enter a Door Number.

Step 7: The LED on the receiver will turn off when a valid PIN and door number has been learned.



HOW TO ORDER REPAIR PARTS

DEVANCO CANADA

19192 HAY ROAD, UNIT Q
SUMMERSTOWN, ON K0C 2E0

TOLL FREE: 855-931-3334
www.devancocanada.com

**WHEN ORDERING REPAIR PARTS
PLEASE SUPPLY THE FOLLOWING INFORMATION:**

- ✓ PART NUMBER
- ✓ DESCRIPTION
- ✓ MODEL NUMBER