

Preparation

You will need:

- 1/4" nut driver or socket, Phillips head screwdriver.

NOTE: Close the garage door *BEFORE* installing the travel module.

1 Disassemble the garage door opener

⚠ WARNING

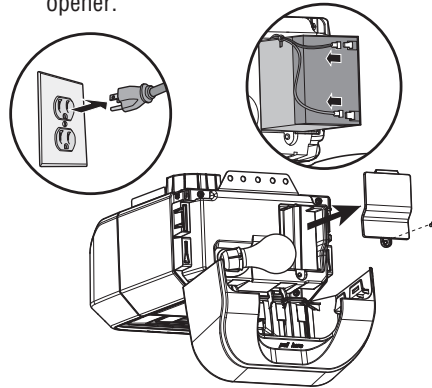
To prevent possible **SERIOUS INJURY** or **DEATH**:

- Disconnect **ALL** electric and battery power **BEFORE** performing **ANY** service or maintenance.

CAUTION

The garage door **MUST** be in the fully closed position during installation. **ALWAYS** wear protective gloves and eye protection when changing the battery or working around the battery compartment.

1.1 Disconnect all electrical and battery power (if applicable) to the garage door opener.

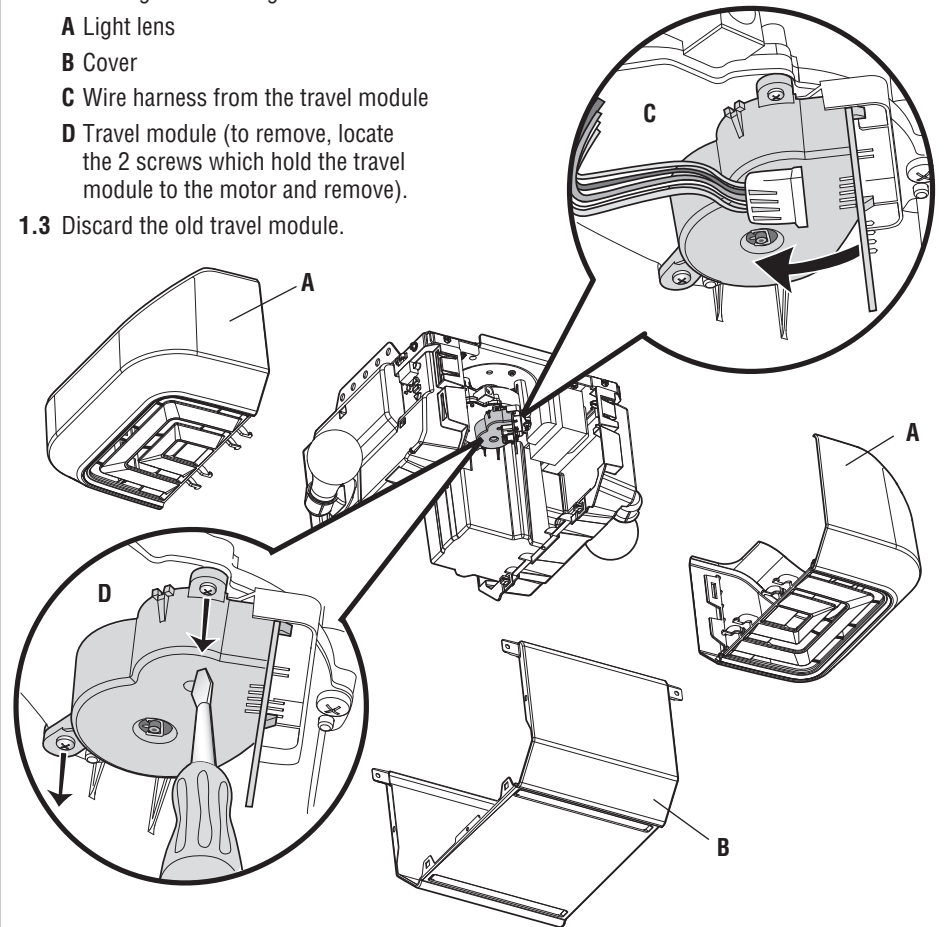


NOTE: The images throughout this manual are for reference and your product may look different.

1.2 Disassemble the garage door opener by removing the following:

- A** Light lens
- B** Cover
- C** Wire harness from the travel module
- D** Travel module (to remove, locate the 2 screws which hold the travel module to the motor and remove).

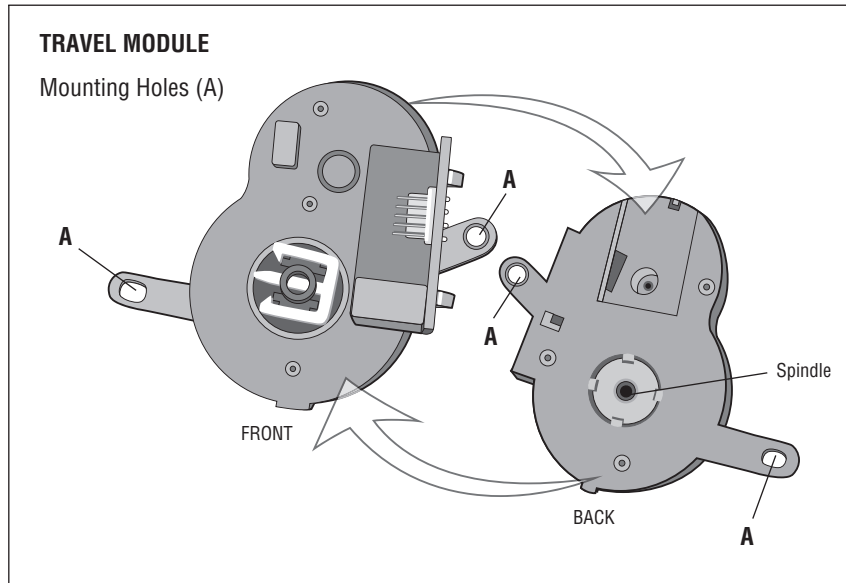
1.3 Discard the old travel module.



For more information:
www.devancocanada.com
or call toll free at 855-931-3334

Installation

2 Install the new travel module



2.1 Install the new travel module by aligning the spindle to the motor.

2.2 Ensure the 2 mounting holes (A) are aligned with the motor. Fasten the travel module to the motor with 2 screws (B).

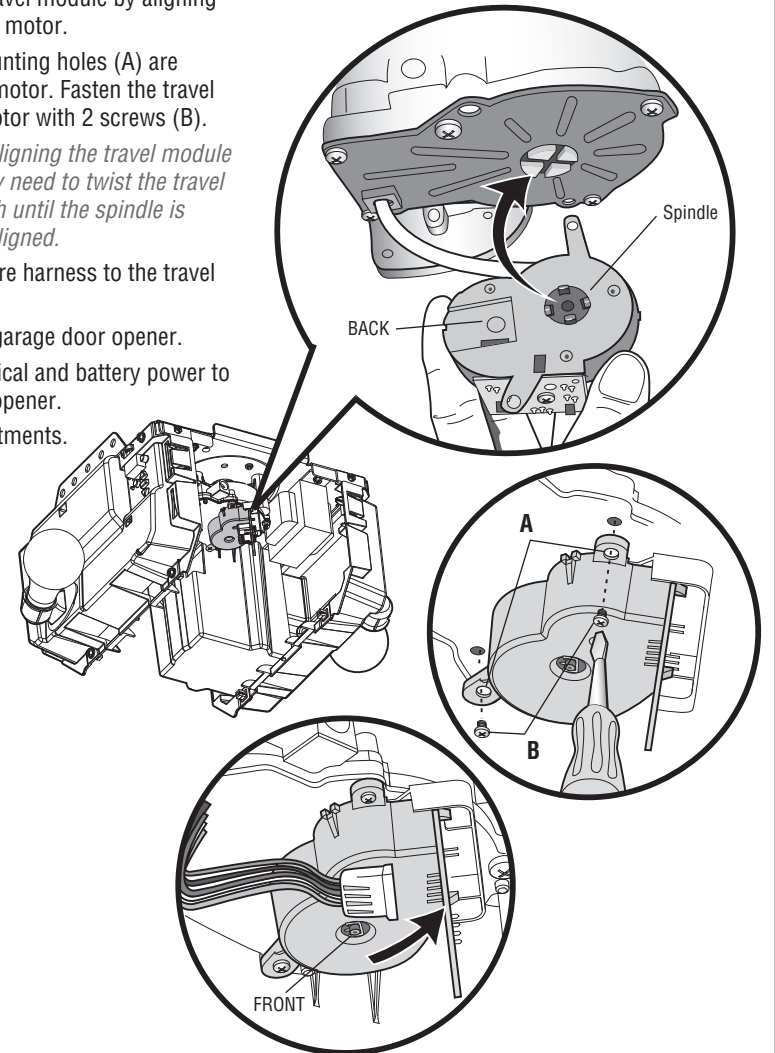
IMPORTANT: When aligning the travel module to the motor, you may need to twist the travel module back and forth until the spindle is seated and properly aligned.

2.3 Reconnect the wire harness to the travel module.

2.4 Reassemble the garage door opener.

2.5 Reapply all electrical and battery power to the garage door opener.

2.6 Proceed to Adjustments.



Adjustment

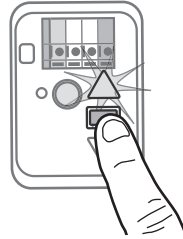
1 Program the travel

⚠ WARNING

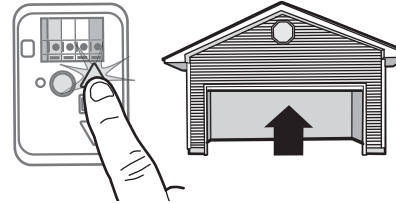
Without a properly installed safety reversal system, persons (particularly small children) could be SERIOUSLY INJURED or KILLED by a closing garage door.

- Incorrect adjustment of garage door travel limits will interfere with proper operation of safety reversal system.
- After ANY adjustments are made, the safety reversal system MUST be tested. Door MUST reverse on contact with 1-1/2" (3.8 cm) high object (or 2x4 laid flat) on floor.

1.1 Press and hold the Adjustment Button until the UP Button begins to flash and/or a beep is heard.

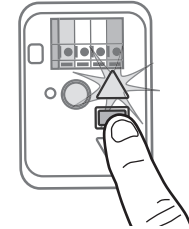


1.2 Press and hold the UP Button until the door is in the desired UP position.

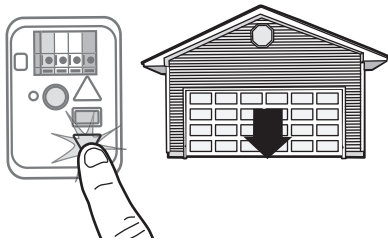


NOTE: The UP and DOWN Buttons can be used to move the door up and down as needed.

1.3 Once the door is in the desired UP position press and release the Adjustment Button. The garage door opener lights will flash twice and the DOWN Button will begin to flash.

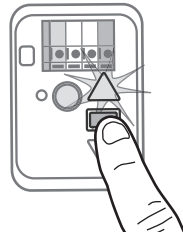


1.4 Press and hold the DOWN Button until the door is in the desired DOWN position.

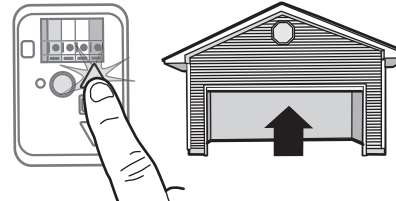


NOTE: The UP and DOWN Buttons can be used to move the door up and down as needed.

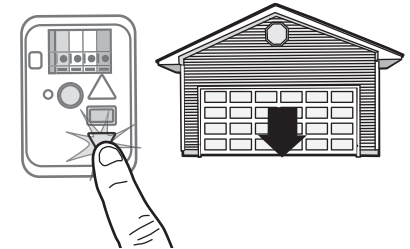
1.5 Once the door is in the desired DOWN position press and release the Adjustment Button. The garage door opener lights will flash twice and the UP Button will begin to flash.



1.6 Press and release the UP Button. When the door travels to the programmed UP position, the DOWN Button will begin to flash.



1.7 Press and release the DOWN Button. The door will travel to the programmed DOWN position. Programming is complete.



* If the garage door opener lights are flashing 5 times during the steps for Program the Travel, the programming has timed out. If the garage door opener lights are flashing 10 times during the steps for Program the Travel, the safety reversing sensors are misaligned or obstructed. When the sensors are aligned and unobstructed, cycle the door through a complete up and down cycle using the remote control or the UP and DOWN buttons. Programming is complete. If you are unable to operate the door up and down, repeat the steps for Programming the Travel.

2 Test the Safety Reversal System

WARNING

Without a properly installed safety reversal system, persons (particularly small children) could be **SERIOUSLY INJURED** or **KILLED** by a closing garage door.

- Safety reversal system **MUST** be tested every month.
- After **ANY** adjustments are made, the safety reversal system **MUST** be tested. Door **MUST** reverse on contact with 1-1/2" high (3.8 cm) object (or 2x4 laid flat) on the floor.

2.1 With the door fully open, place a 1-1/2 inch (3.8 cm) board (or a 2x4 laid flat) on the floor, centered under the garage door.



2.2 Press the remote control push button to close the door. The door **MUST** reverse when it makes contact with the board.



If the door stops and does not reverse on the obstruction, the travel needs to be adjusted (refer to Adjustment Step 1).

Repeat the test. When the door reverses upon contact with the 1-1/2 inch board, remove the board and open/close the door 3 or 4 times to test the adjustment.

If the test continues to fail, call a trained door systems technician.

3 Test the Protector System®

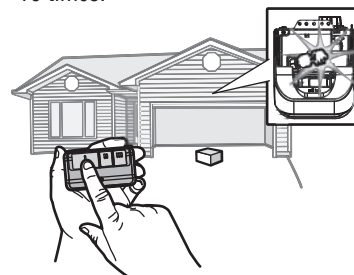
WARNING

Without a properly installed safety reversing sensor, persons (particularly small children) could be **SERIOUSLY INJURED** or **KILLED** by a closing garage door.

3.1 Open the door. Place the garage door opener carton in the path of the door.



3.2 Press the remote control push button to close the door. The door will not move more than an inch (2.5 cm), and the garage door opener lights will flash 10 times.



The garage door opener will not close from a remote control if the LED in either safety reversing sensor is off (alerting you to the fact that the sensor is misaligned or obstructed).

If the garage door opener closes the door when the safety reversing sensor is obstructed (and the sensors are no more than 6 inches [15 cm] above the floor), call for a trained door systems technician.

HOW TO ORDER REPAIR PARTS

DEVANCO CANADA

19192 HAY ROAD, UNIT Q
SUMMERSTOWN, ON K0C 2E0

TOLL FREE: 855-931-3334
www.devancocanada.com

**WHEN ORDERING REPAIR PARTS
PLEASE SUPPLY THE FOLLOWING INFORMATION:**

- ✓ PART NUMBER
- ✓ DESCRIPTION
- ✓ MODEL NUMBER