

LiftMaster®

Commercial Door Operators

APPLICATION

This modification is available on both “Logic” (L) and “Contactor” style (M) LiftMaster operators with 24 V control circuits.

NOTE: Not available on model LGJ or with Hazardous Area Modification.

FUNCTIONS

A 6-digit non-resettable 24 Vac electro-mechanical counter is mounted in the operator control enclosure. This counts the number of times the CLOSE coil is energized on a contactor style operator. When installed on a logic style operator, this will only count the number of cycles when the door reaches the full open position. If a mid-stop is programmed on a logic style operator, this will not activate the counter.

WIRING

Refer to the wiring diagrams provided with the operator. Should you need a replacement diagram or you are unsure of wiring requirements, please call Technical Service at (800) 528-2806.

INSTALLATION

Field modifications require the use of kit 71-90503000. A parts bag for the “Logic” and “Contactor” style operators and a counter will be provided with the field kit.

LOGIC 3 AND LOGIC 4 STANDARD AND DAMP ENVIRONMENT OPERATORS

- 1** Disconnect power from the operator. Verify that all LEDs are OFF on the logic board.
- 2** Remove the parts from the bag labeled “Logic Parts.”
- 3** Using one of the crimp-on wire nuts, attach the 10" black wire with the .187" quick-connect to one of the black wires coming from the counter.
- 4** Using the remaining crimp-on wire nut, attach the 10" black wire with the .25" piggy-back quick-connect to the remaining black wire coming from the counter.
- 5** Locate the mounting position for the counter (Figures 1 and 3). Using the #8 screws (2) (Model H electrical box) or the #6 screws (2) (Model T or Damp Environment electrical box), mount the counter in the electrical box making sure that the wires are not pinched under the counter.
- 6** Locate the limit switch, plastic standoff for the limit switch, lockwashers (2), metal nut plate (1), metal back plate (1), and pan head 4-40 screws (2) and install the limit switch above the open limit switch (OLS) in the operator. Be careful to line up the this limit switch with the OLS so that it will activate just before the OLS activates.
- 7** Connect the 10" black wire with the .187" quick-connect (attached to the counter) to the common terminal of the limit switch that was just installed.
- 8** Connect the 10" blue wire with the .187" quick-connect and .25" piggy-back quick-connect to the normally closed (NC) terminal of the limit switch that was just installed.

NON-RESETTABLE COUNTER 90503000 and 71-90503000

WARNING

To prevent possible SERIOUS INJURY or DEATH from electrocution, disconnect electric power to operator BEFORE installing.

ALL electrical connections MUST be made by a qualified individual.

FIGURE 1
LOGIC 3 OR LOGIC 4 STANDARD
MODELS H AND J OPERATORS

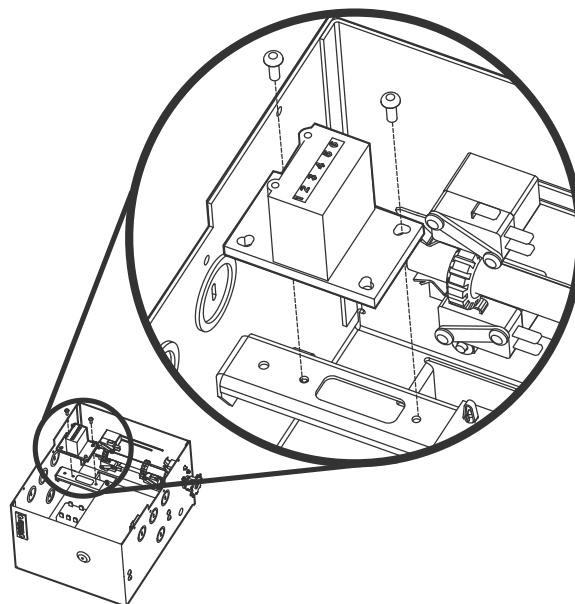
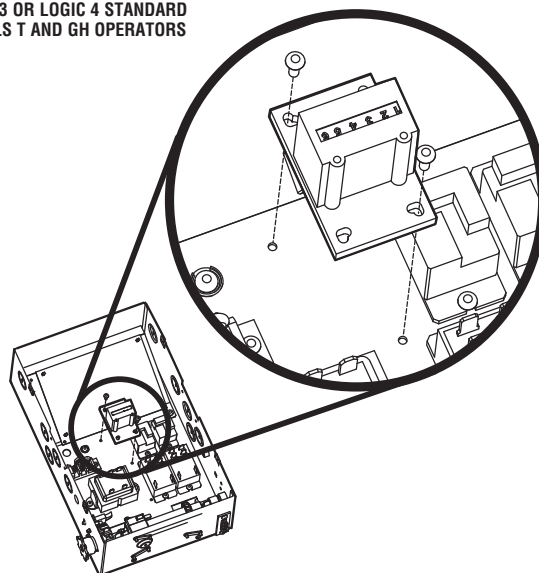


FIGURE 2
LOGIC 3 OR LOGIC 4 STANDARD
MODELS T AND GH OPERATORS



- 9** Remove both wires from the 24 V secondary of the transformer, one yellow and one blue.
- 10** Attach the .25" quick-connect of the blue wire (connected to the NC terminal of the limit switch) to one of the bare terminals on the 24 V secondary of the transformer. Connect blue wire removed in the previous step to the piggy-back terminal of the wire.
- 11** Attach the .25" quick-connect of the black wire (connected to the counter) to the remaining bare terminal on the 24 V secondary of the transformer. Connect the yellow wire previously removed from the transformer to the piggy-back terminal of the wire.

12 Secure loose wires with cable ties.

13 Restore power to the operator. Verify normal operation.

CONTACTOR STYLE OPERATORS

- 1** Disconnect power from the operator. Verify that it is inoperable.
- 2** Remove the parts from the bag labeled "Contactor Parts."
- 3** Using the crimp-on wire nuts, attach each of the 20" black wires to each of the black wires coming from the counter.
- 4** Using the #8 screws (2), mount the counter to the electrical box. Depending on the electrical box, it may be necessary to drill one or more holes in the box to mount the counter securely. Make sure that the wires are not pinched under the counter.
- 5** Connect one of the black wires from the counter to the A1 terminal of the close side of the contactor.
- 6** Connect the remaining black wire from the counter to the A2 terminal of the close side of the contactor.
- 7** Secure loose wires with cable ties.
- 8** Restore power to the operator. Verify normal operation.

FIGURE 3

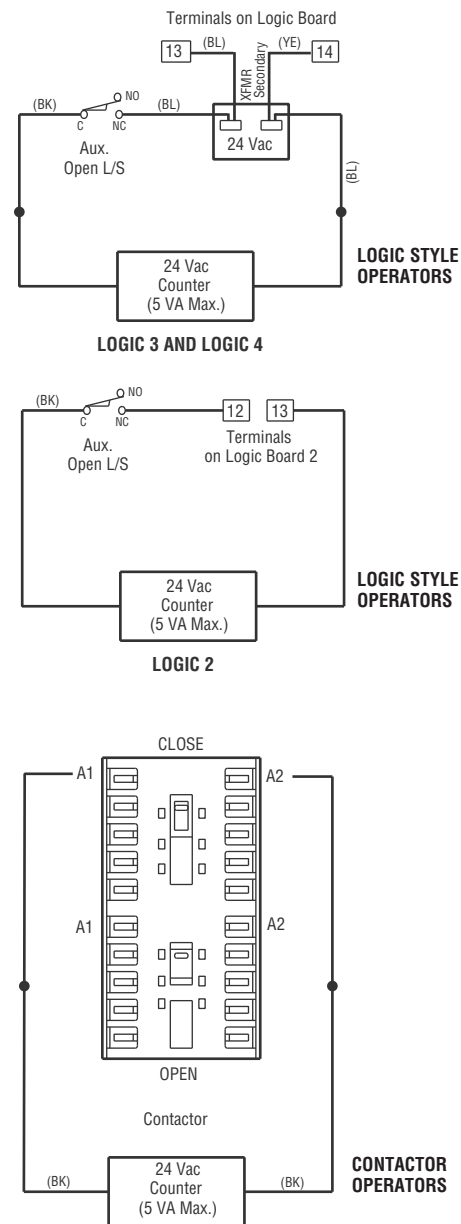
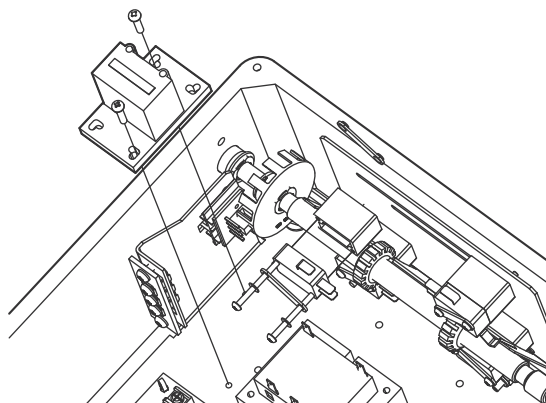


FIGURE 4

**LOGIC 3 AND LOGIC 4 DAMP ENVIRONMENT
MODELS CT, CH, CJ, CGH AND CGT**



***HOW TO ORDER
REPAIR PARTS***

DEVANCO CANADA

19192 HAY ROAD, UNIT Q
SUMMERSTOWN, ON K0C 2E0

TOLL FREE: 855-931-3334

www.devancocanada.com

**WHEN ORDERING REPAIR PARTS
PLEASE SUPPLY THE
FOLLOWING INFORMATION:**

- ✓ PART NUMBER
- ✓ DESCRIPTION
- ✓ MODEL NUMBER