

DC Alarm Kit

K76-G0537 for HS670 and SL540/570/580 Operators

CARTON INVENTORY

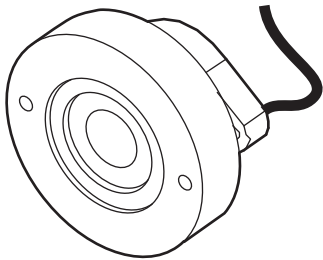
- Alarm with wire harness (1)
- Extra blue wire stripped on both sides (connects J1-3 to J1-15) (1)
- Wire ties (4)
- Flange (41-G0538) (1)

TOOLS NEEDED

- Pliers
- #2 Phillips Screw driver
- 1/8" flat Phillips Screw driver
- Diagonal wire cutters
- Wire strippers

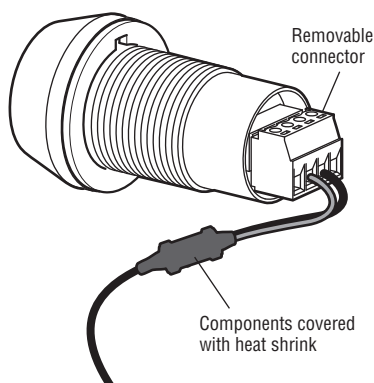
HOW TO IDENTIFY THE AC AND DC ALARM

AC ALARM



- NO removable connector
- Short body
- Wire harness DOES NOT have components covered with heat shrink

DC ALARM



- Removable connector
- Long body
- Wire harness has components covered with heat shrink

WARNING

Disconnect power at the fuse box before proceeding. If necessary remove the operator from its mounted position. Operator **MUST** be properly grounded and connected in accordance with local electrical codes. **NOTE: the operator should be on a separate fused line of adequate capacity.** ALL electrical connections **MUST** be made by a qualified individual.

**For more information,
please visit www.devancocanada.com or call toll free at 855-931-3334**

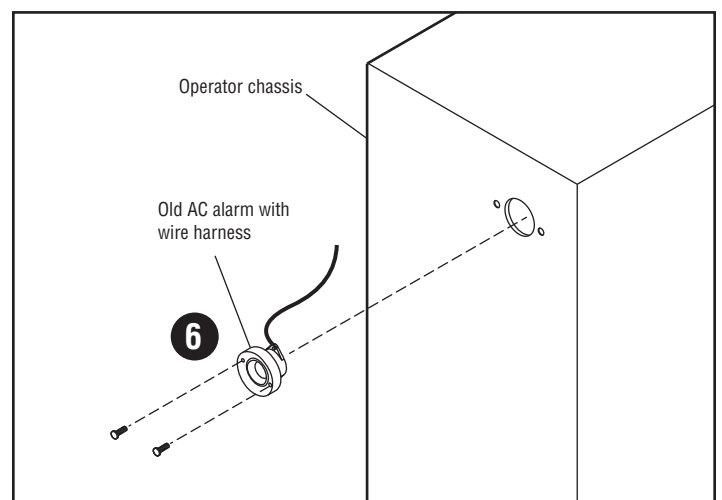
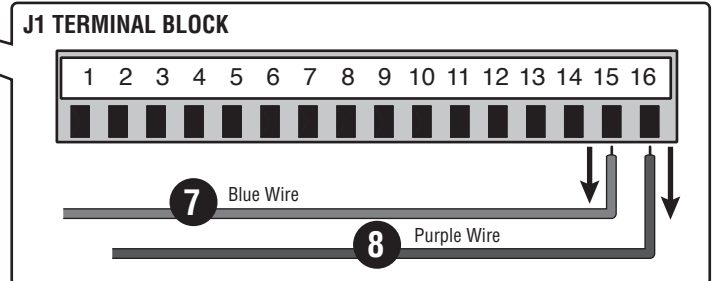
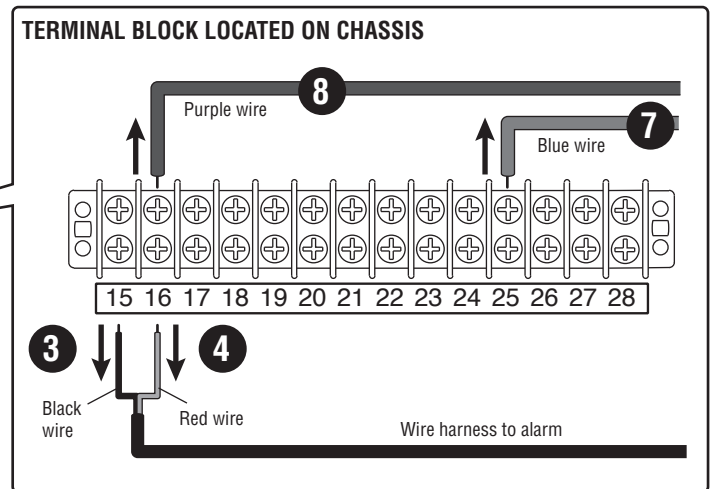
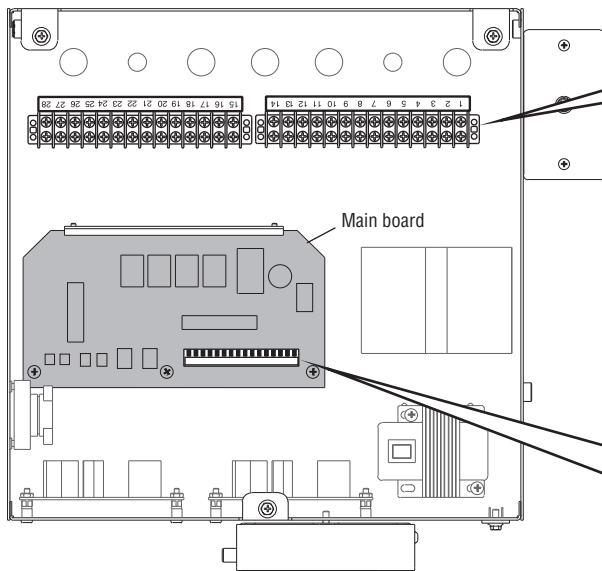
LiftMaster®

REPLACE AC ALARM WITH THE NEW DC ALARM (HS670, SL540 AND SL570)

Remove the existing AC alarm:

1. Disconnect power from the operator.
2. Locate the wire harness from the existing alarm.
3. Disconnect the black wire from pin 15.
4. Disconnect the red wire from pin 16.

5. Cut the wire ties holding the wire harness.
6. Remove the screws holding the alarm to the chassis. Remove the old alarm from the chassis.
7. Disconnect the blue wire from pin 25 and J1-15.
8. Remove the purple wire from pin 16 and J1-16.

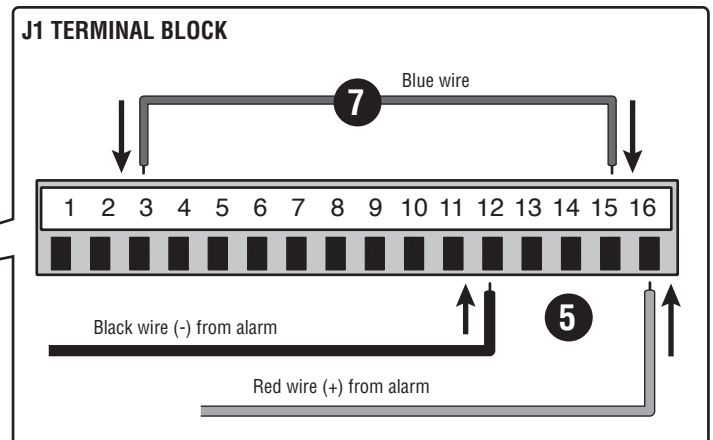
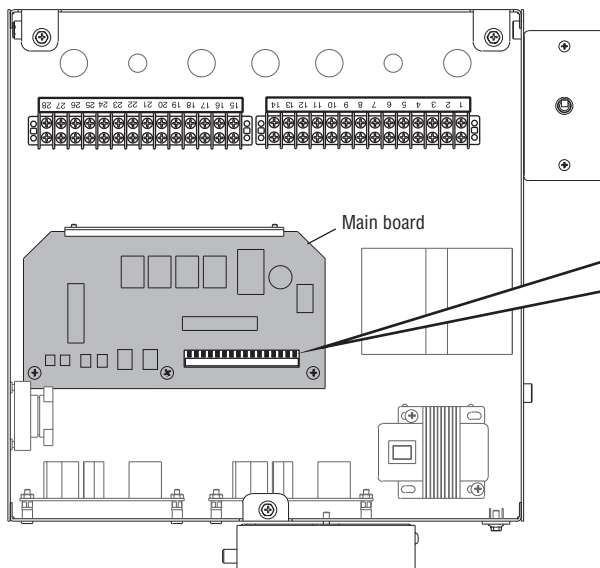
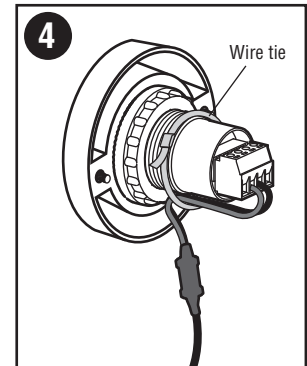
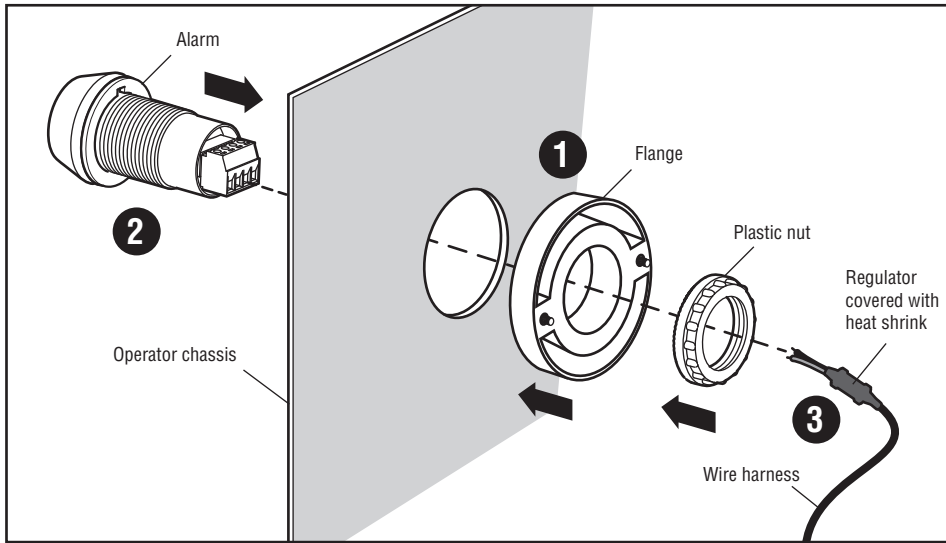


Install the new DC alarm:

1. Insert the provided alarm flange onto the chassis using the mounting holes that held the old alarm.
2. Mount the alarm in the flange.
 - a. Remove the plastic nut from the alarm.
 - b. Insert the alarm through the flange.
 - c. Secure the alarm to the flange with the plastic nut.
3. Locate the end of the new wire harness with the regulator covered with heat shrink. Connect the two wires from the regulator to the connector on the alarm. Polarity is not important.

NOTE: The connector can be removed from the alarm to aid in assembly. If you remove the connector to fasten the wires, make sure to replace it securely on the alarm.

4. Use a provided wire tie to secure the wires from the alarm to the body of the alarm as shown to prevent the wires from being tangled in the sprocket.
5. Route new wire harness to the main board. Connect the red wire to J1-16. Connect the black wire to J1-12. Note that polarity is important here (see illustration). If NOT connected with correct polarity, the alarm will be damaged.
6. Use the wire ties provided to secure the harness.
7. Connect the blue wire between J1-3 to J1-15.
8. Restore power to the operator.

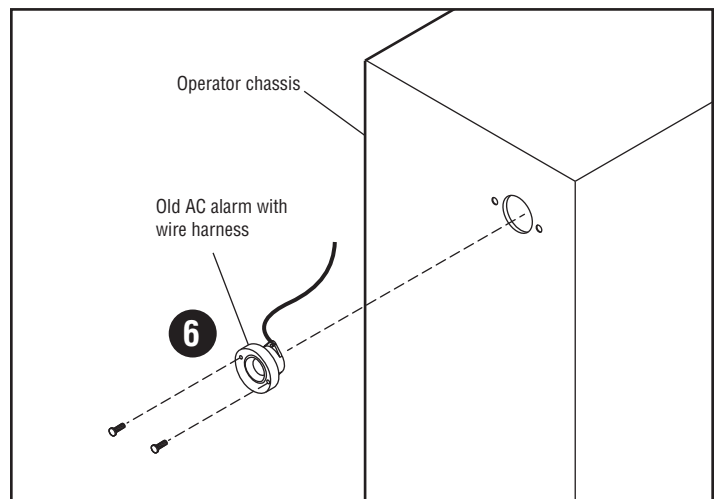
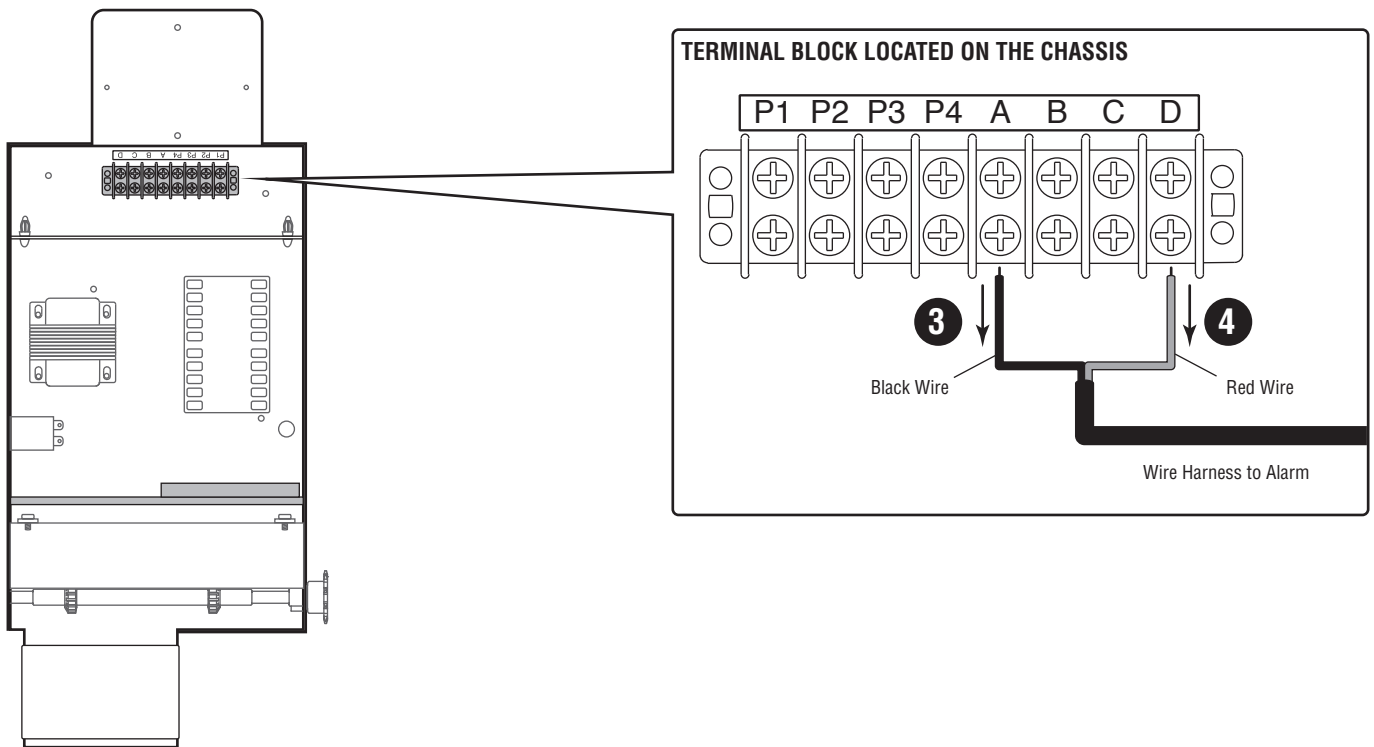


REPLACE AC ALARM WITH THE NEW DC ALARM (SL580)

Remove the existing AC alarm:

1. Disconnect power from the operator.
2. Locate the wire harness from the existing alarm.
3. Disconnect the black wire from terminal block pin A.

4. Disconnect the red wire from terminal block pin D.
5. Cut the wire ties holding the wire harness.
6. Remove the screws holding the alarm to the chassis. Remove the old alarm from the chassis.

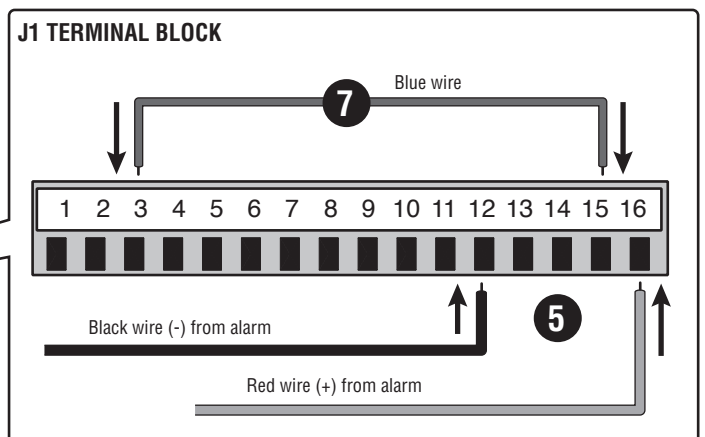
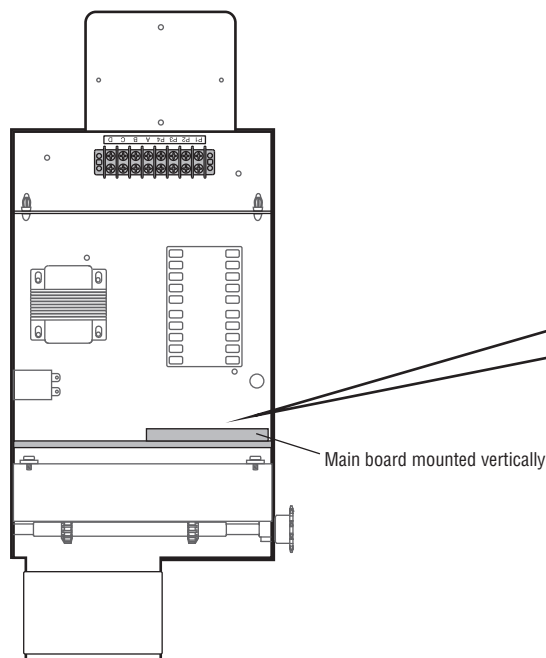
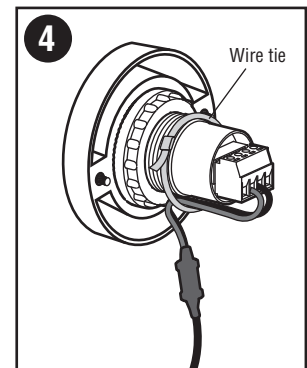
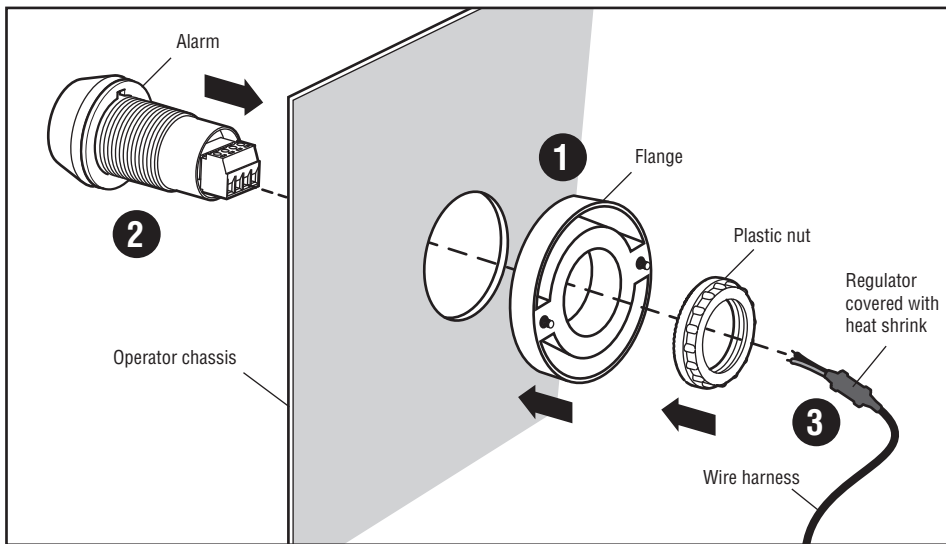


Install the new DC alarm:

1. Insert the provided alarm flange onto the chassis using the mounting holes that held the old alarm.
2. Mount the alarm in the flange.
 - a. Remove the plastic nut from the alarm.
 - b. Insert the alarm through the flange.
 - c. Secure the alarm to the flange with the plastic nut.
3. Locate the end of the new wire harness with the regulator covered with heat shrink. Connect the two wires from the regulator to the connector on the alarm. Polarity is not important.

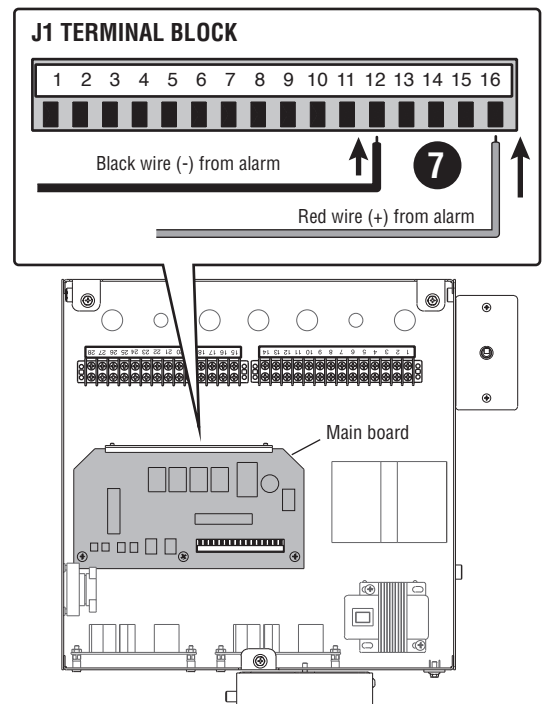
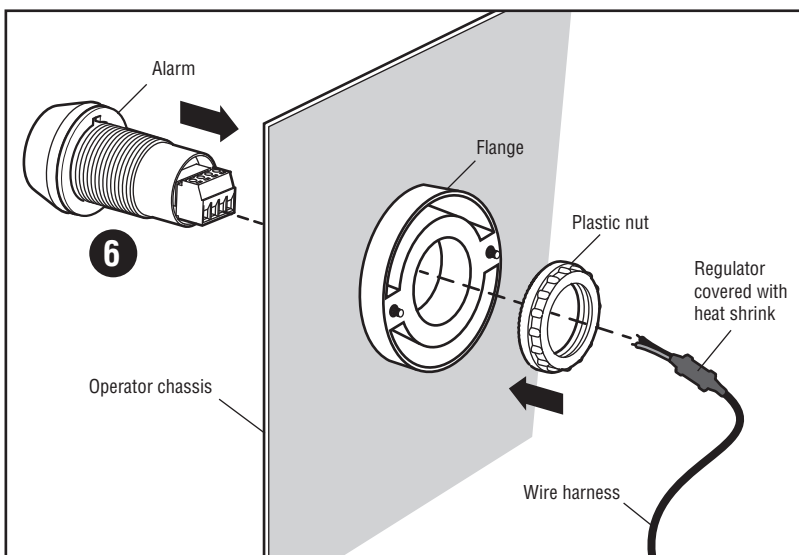
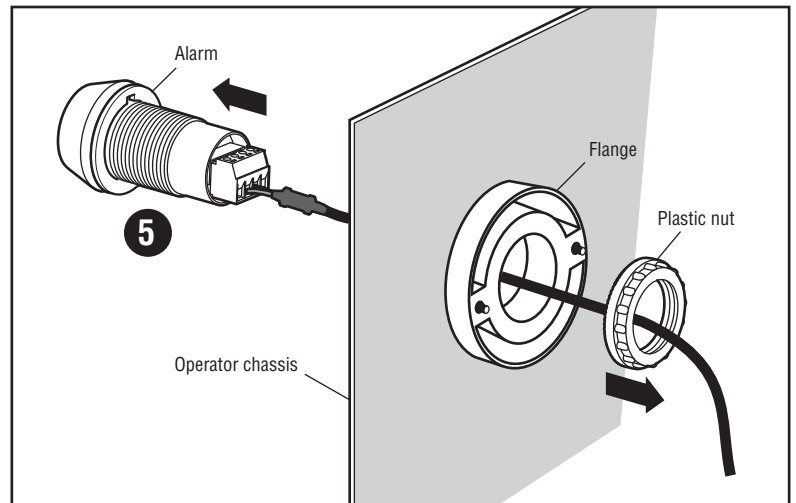
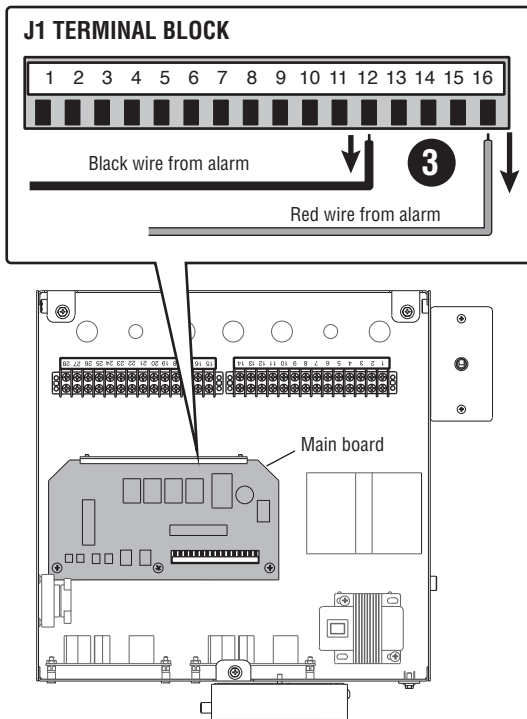
NOTE: The connector can be removed from the alarm to aid in assembly. If you remove the connector to fasten the wires, make sure to replace it securely on the alarm.

4. Use a provided wire tie to secure the wires from the alarm to the body of the alarm as shown to prevent the wires from being tangled in the sprocket.
5. Route new wire harness to the main board. Connect the red wire to J1-16. Connect the black wire to J1-12. Note that polarity is important here (see illustration). If NOT connected with correct polarity, the alarm will be damaged.
6. Use the wire ties provided to secure the harness.
7. Connect the blue wire between J1-3 to J1-15.
8. Restore power to the operator.

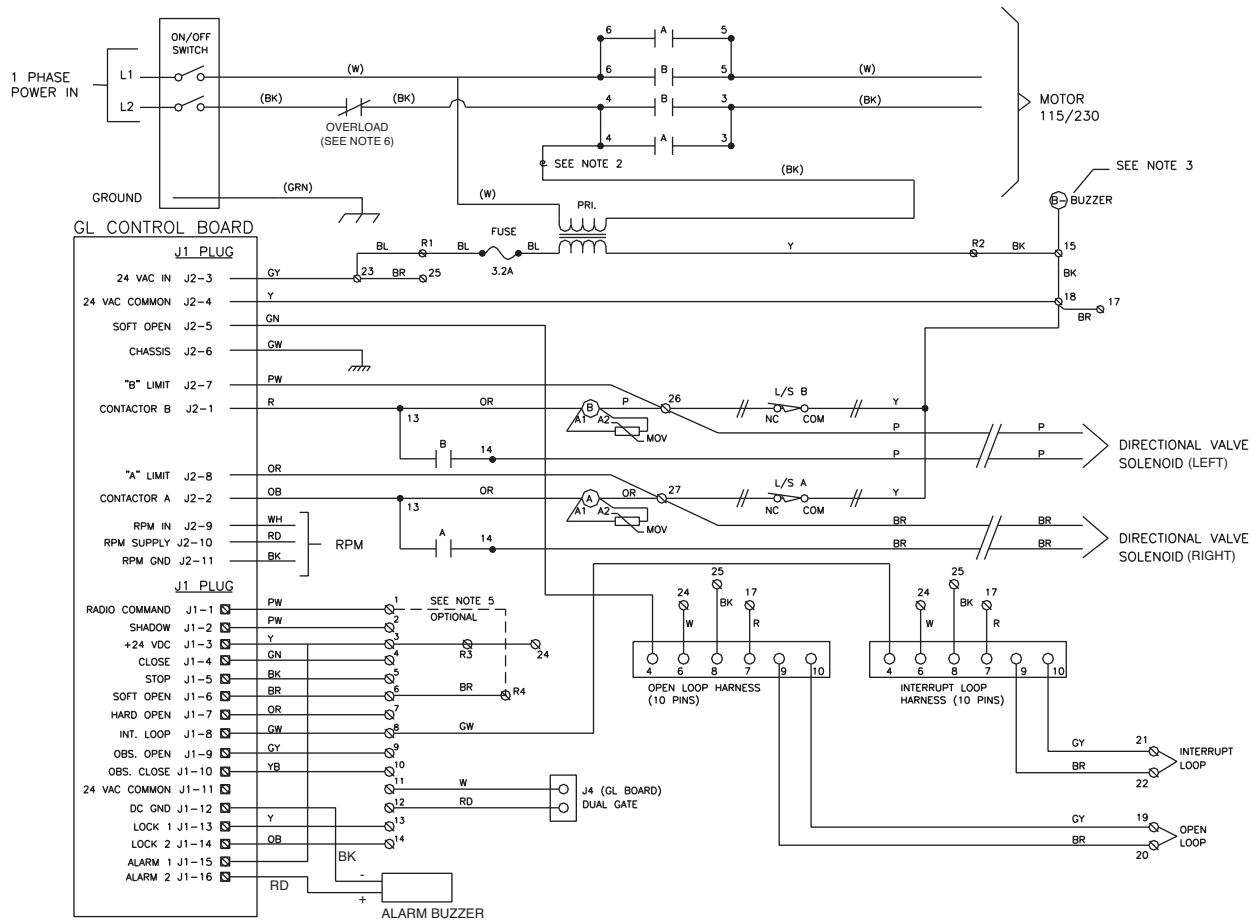
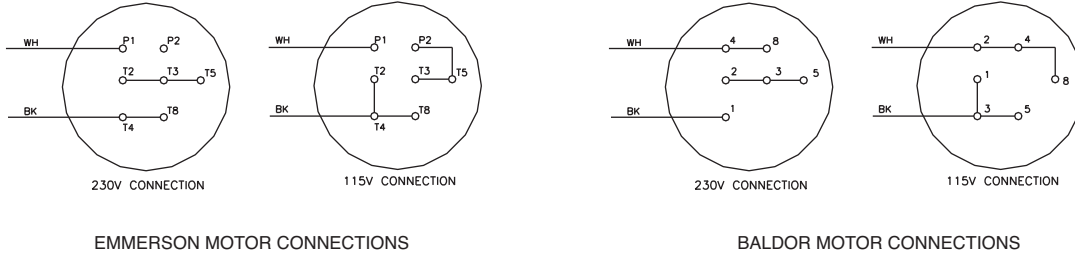


REPLACE DC ALARM WITH THE NEW DC ALARM

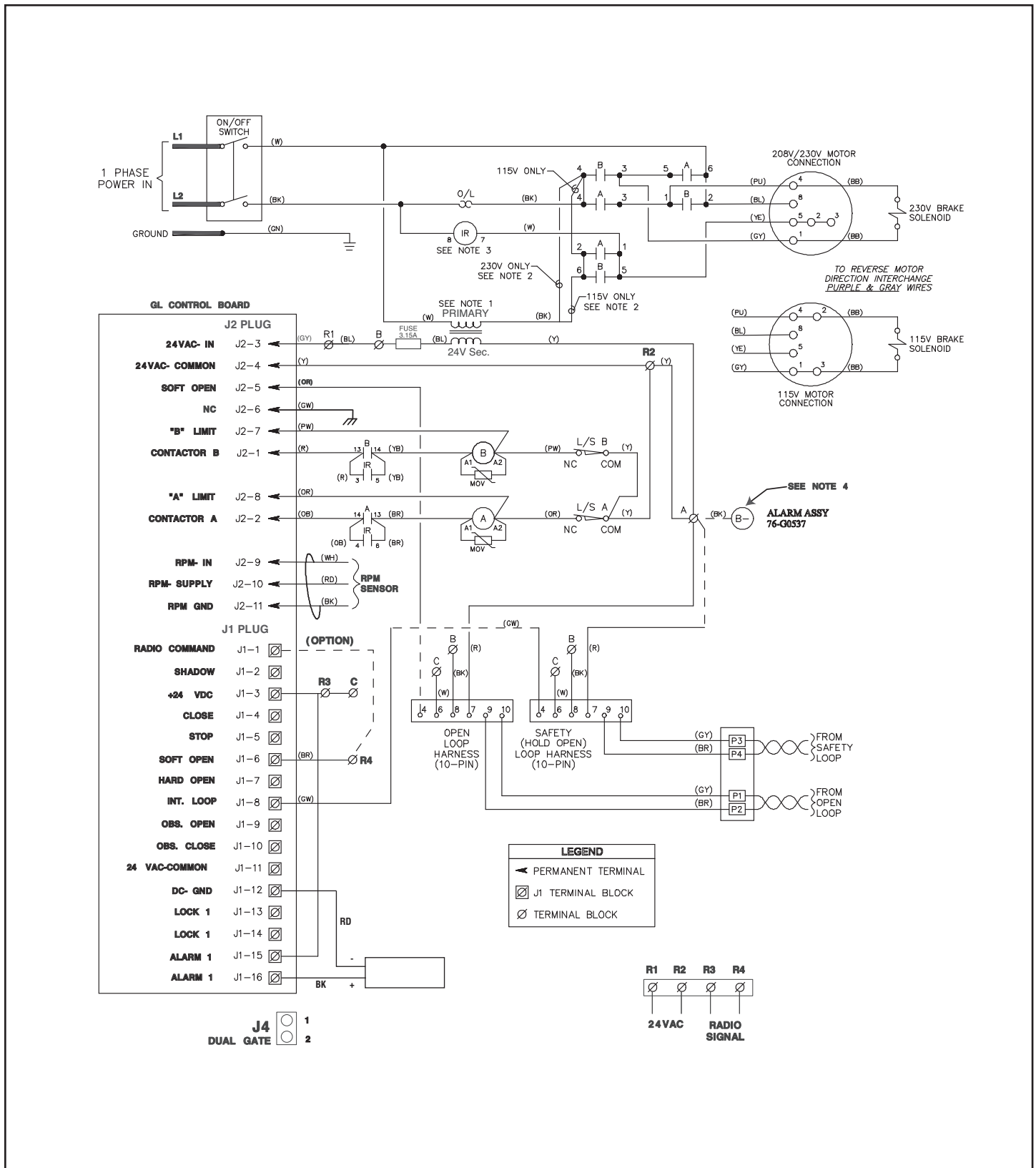
1. Disconnect power from the operator.
2. Locate the wire harness from the existing alarm which is connected to the J1 terminal block. **Note how the wire harness is routed from the chassis, through the ebox to the terminal block so that you can follow the same route with the new wire harness.**
3. Disconnect the wire harness from J1-16 and J1-12. **NOTE: The J1 terminal block can be removed from the main board to aid in wiring. If you remove the terminal block, make sure to replace it securely on the main board.**
4. Cut any wire ties holding the wire harness.
5. Remove the plastic nut that holds the alarm onto the flange and remove the old alarm and wire harness from the operator.
6. Mount the new alarm and wire harness in the reverse fashion that the old one was removed.
7. Route the wire harness to the main board following the same path as the old harness. Connect the red wire to J1-16, and the black wire to J1-12. Polarity is important (see illustration). If NOT connected with correct polarity, the alarm will be damaged.
8. Restore power to the operator.



1 PHASE WIRING DIAGRAM HS670



1 PHASE WIRING DIAGRAM SL540/570/SL580



***HOW TO ORDER
REPAIR PARTS***

DEVANCO CANADA

19192 HAY ROAD, UNIT Q
SUMMERSTOWN, ON K0C 2E0

TOLL FREE: 855-931-3334
www.devancocanada.com

**WHEN ORDERING REPAIR PARTS
PLEASE SUPPLY THE
FOLLOWING INFORMATION:**

- ✓ PART NUMBER
- ✓ DESCRIPTION
- ✓ MODEL NUMBER