



# LZR<sup>®</sup>-H100

LASER SCANNER FOR GATE AND BARRIER APPLICATIONS



## LEARN MORE



click or scan

## TECHNOLOGY



## CERTIFICATIONS

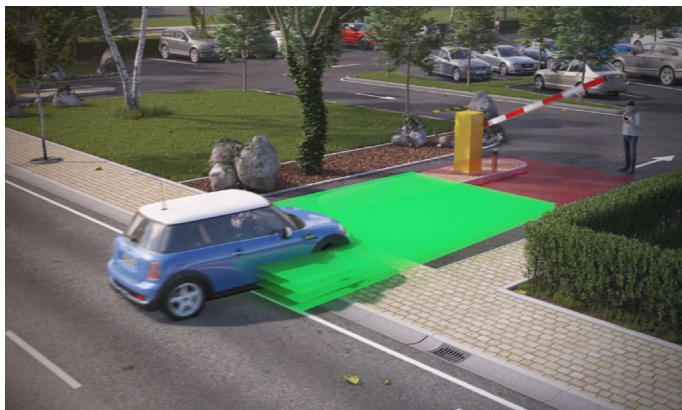
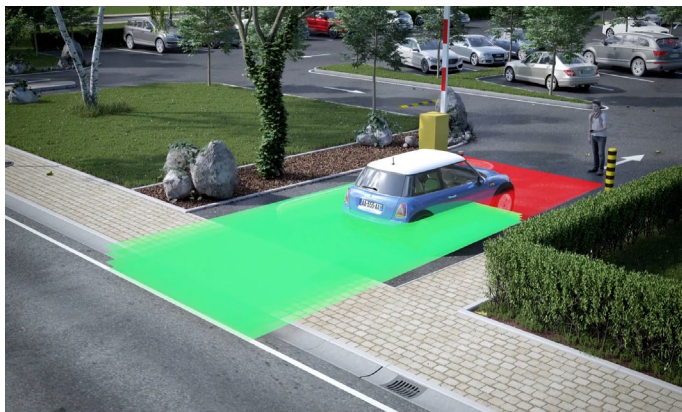


## DESCRIPTION

BEA's **LZR-H100** is a LASER-based Time-of-Flight sensor designed for gate and barrier applications.

This solution provides four LASER-based curtains, offering a three-dimensional detection zone for accurate object detection. Its detection curtains are highly configurable and can be set up for activation and presence detection in vehicle-sensing applications.

The **LZR-H100** is an effective alternative to induction loops and is housed in an IP65-rated enclosure, further ensuring its performance in outdoor environments.



### Dual-Relay Activation

Two relays allow for activation via motion or presence

### Effective Alternative To Loop Detectors

Ideal for applications where cutting ground for loops is prohibited, impossible, or expensive

### Reliable And Constant Detection

Time-of-Flight, presence-based, opto-electronic sensor ensures accurate and immediate detection

### Trajectory Detection

Ability to detect vehicle trajectory during approach and departure

### Pedestrian-Traffic Rejection

Ability to detect or ignore pedestrian traffic

### Large Detection Field

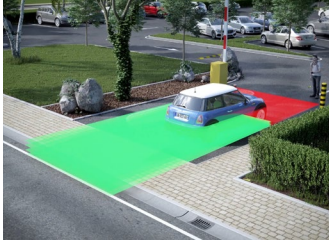
Maximum detection field of 32 ft x 32 ft (9 ¾ m x 9 ¾ m)

### Ease Of Installation

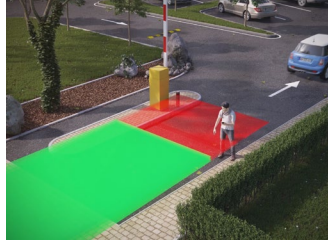
Teach-in setup via walk path or remote control configuration

For more information, please visit [www.devancocanada.com](http://www.devancocanada.com) or call toll free at 1-855-931-3334

## APPLICATIONS



Gate & Barrier Presence Detection



Pedestrian Presence Detection



Gate & Barrier Activation

## TECHNICAL SPECIFICATIONS

<b>Technology</b>	LASER scanner, Time-of-Flight measurement
<b>Detection Mode</b>	Motion and presence
<b>Max. Detection Range</b>	32' x 32' (9 ¾ m)
<b>Remission Factor</b>	> 2%
<b>Angular Resolution</b>	0.3516°
<b>Emission Characteristics</b>	
IR LASER	Wavelength 905 nm; max. output pulse power 0.10 mW (CLASS 1)
Red Visible LASER	Wavelength 635 nm; max. output CW power 3 mW (CLASS 2R)
<b>Supply Voltage</b>	10 – 35 VDC @ sensor terminal
<b>Peak Current at Power-On</b>	1.8 A (max. 80 ms @ 35 V)
<b>Power Consumption</b>	< 5 W
<b>Response Time</b>	
Motion Detection	typ. 200 ms (adjustable)
Presence Detection	typ. 20 ms (max. 80 ms)
<b>Output</b>	2 electronic relays (galvanic isolated – polarity free)
Max. Switching Voltage	35 VDC / 24 VAC
Max. Switching Current	80 mA (resistive)
Switching Time	t <sub>ON</sub> = 5 ms; t <sub>OFF</sub> = 5 ms
Output Resistance	typ 30 Ω
Voltage Drop on Output	< 0.7 V @ 20 mA
<b>LED Signal</b>	1 blue LED: Power-on 1 orange LED: Error status 2 bi-colored LEDs: Detection / Output Status (green = no detection, red = detection)
<b>Dimensions</b>	3 5/8" (W) x 2 3/4" (H) x 5" (D) sensor base: + 1/2"
<b>Cable Length</b>	33'
<b>Material</b>	PC / ASA
<b>Color</b>	Black
<b>Rotation Angle on Bracket</b>	±5° (lockable)
<b>Tilt Angle on Bracket</b>	±3°
<b>Degree of Protection</b>	NEMA 4 / IP65
<b>Temperature Range</b>	
Powered	-22 – 140 °F (-30 – 60 °C)
Unpowered	14 – 140 °F (-10 – 60 °C)
<b>Humidity</b>	0 – 95% non-condensing
<b>Vibrations</b>	< 2 G
<b>Pollution on Front Screens</b>	Max. 30%; homogenous
<b>Norm Conformity</b>	2006 / 95 / EC: LVD; 2004 / 108 / EC: EMC; IEC 60825-1:2007; IEC 61000-6-2:2005; 2002 / 95 / EC: RoHS; IEC 60529:2001; IEC 60950-1:2005; IEC 61000-6-3:2006

## PRODUCT SERIES



**10LZRH100**  
LZR-H100 sensor



**10LBA**  
LZR mounting bracket accessory



**10LHB**  
LZR housing bracket

## ACCESSORIES



**10REMOT**  
BEA universal remote control



**10PSMDR2024**  
100 – 240 VAC,  
24 VDC power supply



**10PSST242**  
242VDC 2A Plug-in  
Power supply



**35.1242**  
30' harness, 8-conductor

## RELATED PRODUCTS



**10GL1200R**  
1200 lb / Front mount  
for sliding gate



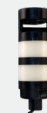
**10GL1200SR**  
1200 lb / Side mount for  
swinging door / gate



**10LZBRGATE1200**  
L & Z Mounting  
bracket



**10BR3X**  
BR3-X logic module



**10LIGHT-XX**  
LED signal modular  
light series

**DISCLAIMER** Information is supplied upon the condition that the persons receiving it will make their own determination as to its suitability for their purposes prior to use. In no event will BEA be responsible for damages of any nature whatsoever resulting from the use of or reliance upon information from this document or the products to which the information refers. BEA has the right without liability to change descriptions and specifications at any time.

WWW.BEASENSORS.COM



BEA AMERICAS / RIDC Park West / 100 Enterprise Drive / Pittsburgh, PA  
T 1-800-523-2462 / F 1-888-523-2462 / E info-us@BEAsensors.com

A Halma company