

# LiftMaster

## PROGRAMMABLE DIP SWITCH REMOTE CONTROLS Models 811LMX and 813LMX

### Introduction

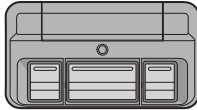
The 811LMX and 813LMX are programmable DIP switch remote controls for use with LiftMaster commercial products using Security+ 2.0® Encrypted DIP, as well as older 315 MHz DIP or 390 MHz DIP devices. The remote control default setting is Security+ 2.0®.

The 813LMX model is designed for OPEN/CLOSE/STOP functionality.

*The images throughout this manual are for reference only and your product may look different.*



811LMX



813LMX

### ⚠ WARNING

To prevent possible serious injury or death from a moving gate or garage door:

- ALWAYS keep remote controls out of reach of children. NEVER permit children to operate, or play with remote control transmitters.
- Activate gate or door ONLY when it can be seen clearly, is properly adjusted, and there are no obstructions to door travel.
- ALWAYS keep gate or garage door in sight until completely closed. Never permit anyone to cross path of moving gate or door.



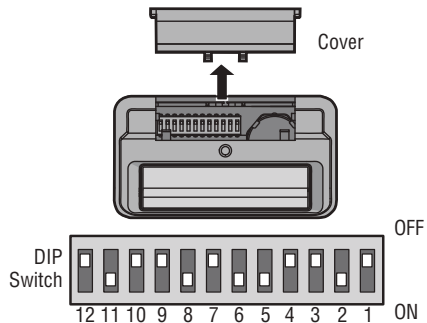
**WARNING:** This product can expose you to chemicals including lead, which are known to the State of California to cause cancer or birth defects or other reproductive harm. For more information go to [www.P65Warnings.ca.gov](http://www.P65Warnings.ca.gov).

### Programming

#### Step 1: Set the DIP Switches

- 1 Slide the cover open to access the DIP switches.
- 2 Use a pen or screwdriver to slide the DIP switches to any position you want (ON or OFF).

**NOTE:** If you are 'matching' the DIP switch setting from an existing 61LM or 361LM, your original remote setting cannot be using ANY of the center '0' settings and Position 1 must be in the OFF position. If your original remote does have any '0' settings or Position 1 in the ON position, please select a new DIP setting on your 811LMX and program it into your commercial receiver. Any future 811LMX remotes will copy this setting and will be programmed to the appropriate Security Type.



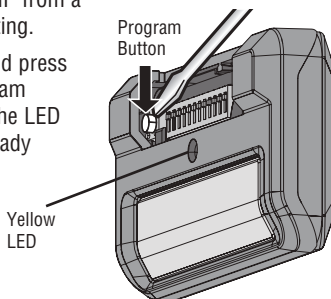
For more information, please visit [www.devancocanada.com](http://www.devancocanada.com) or call toll free at 855-931-3334

## Step 2: Select the Security Type

**NOTE:** If the device you use with this remote is Security+ 2.0® Encrypted DIP, skip this step and go to Step 3: Program the Remote to a Device.

Follow these steps to select 315 MHz DIP, 390 MHz DIP or to reset the remote to Security+ 2.0® Encrypted DIP from a different setting.

- 1 Locate and press the Program Button. The LED glows steady Yellow.



- 2 Press any remote control button the number of times that corresponds to the security type for your device.

# OF PRESSES	DEVICE SECURITY TYPE
1	Security+ 2.0® (811LM/813LM)
2	315 MHz DIP (361LM/333LM)
3	390 MHz DIP (61LM/33LM)

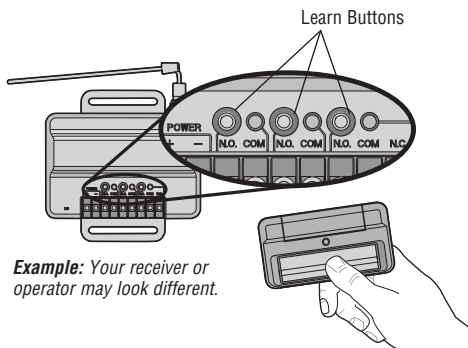
- 3 Press and hold the Program Button until the LED on the front of the remote turns off.

## Step 3: Program the Remote to a Device

See your LiftMaster device's manual for programming.

- 1 Press and release the LEARN button on your device.
- 2 Within 30 seconds press and hold the button on the remote control that you wish to program to the device.
- 3 Test by pressing the remote button you just programmed. The operator or gate activates.

Additional buttons on the 813LMX can be programmed to operate other devices of the same security type.



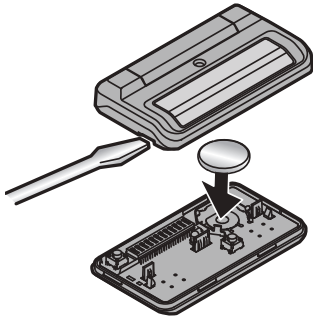
**Example:** Your receiver or operator may look different.

## Open, Close, Stop

The 813LMX can be programmed for OPEN/CLOSE/STOP functionality. Refer to your device manual for instructions.

## The Remote Control Battery

The lithium battery should produce power for up to 3 years. To replace battery:



Remote 811LMX or (IFT#: \_\_\_\_\_)

Operation of this equipment is subject to the following two conditions:  
(1) This equipment may not cause harmful interference, including that which may cause undesired operation.

## **!** WARNING

To prevent possible **SERIOUS INJURY** or **DEATH**:

- **NEVER** allow small children near batteries.
- If battery is swallowed, immediately notify doctor.

To reduce risk of fire, explosion or chemical burn:

- Replace **ONLY** with 3V CR2032 coin batteries.
- **DO NOT** recharge, disassemble, heat above 212°F (100°C) or incinerate.

NOTICE: To comply with FCC and/or Industry Canada (IC) rules, adjustment or modifications of this transceiver are prohibited. THERE ARE NO USER SERVICEABLE PARTS.

This device complies with Part 15 of the FCC rules and IC RSS-210. Operation is subject to the following two conditions: (1) this device may not cause harmful interference, and (2) this device must accept any interference received, including interference that may cause undesired operation.

## Replacement Parts

Visor Clip ..... K029B0137  
3V CR2032 lithium Battery ..... K010A0020

### **HOW TO ORDER REPAIR PARTS**

## **DEVANCO CANADA**

19192 HAY ROAD, UNIT Q  
SUMMERSTOWN, ON K0C 2E0

TOLL FREE: 855-931-3334

[www.devancocanada.com](http://www.devancocanada.com)

**WHEN ORDERING REPAIR PARTS  
PLEASE SUPPLY THE FOLLOWING INFORMATION:**

- ✓ **PART NUMBER**
- ✓ **DESCRIPTION**
- ✓ **MODEL NUMBER**