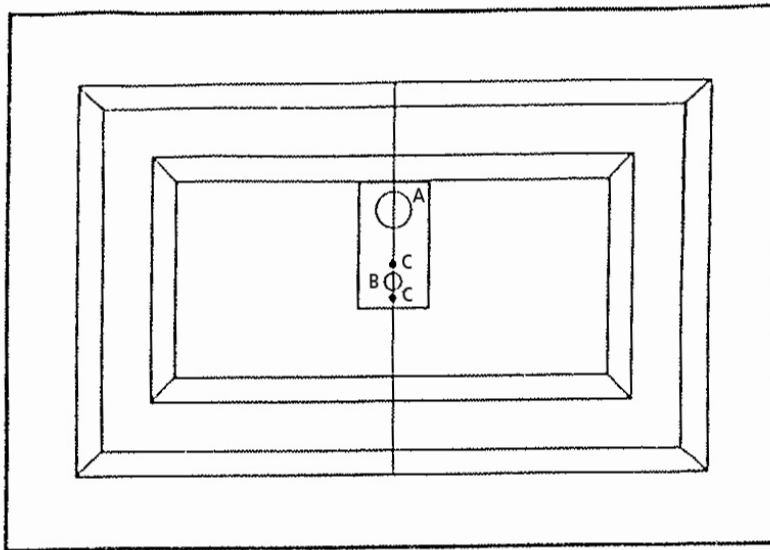


ASSEMBLY MANUAL FOR BARLOCK FRONT & BACK PLATE

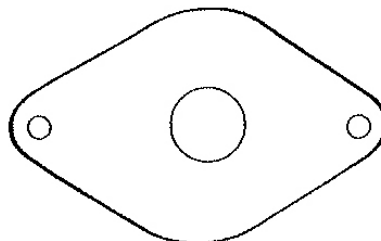
1. On bottom 2nd section, draw a center line on the outside panel.
Example: If door is 8' wide, draw a line at 4'.
2. Put back pate (3-1/2" x 7") on outside panel as a template and circle with a pencil to make a 1-3/8" diameter hole (A).



3. With a center punch, punch 4 holes in center.
4. Use a drill saw 1-1/4" to perforate (A).
5. Use a 7/16" drill for (B).
6. Use a 1/4" drill for (C).

ASSEMBLY

1. Take front plate (3" diameter aluminum disc) with 2 screws 10/24" x 2-1/4" and screw to back plate.
2. Put cylinder lock through door and secure with brass cover.
3. Assemble lock with 4 screws (#8 x 3/8") on back plate.
4. Assemble handle spacer with 2 screws (#8 x 3/8") on back plate.
5. Assemble bar lock.



END STILE LOCK

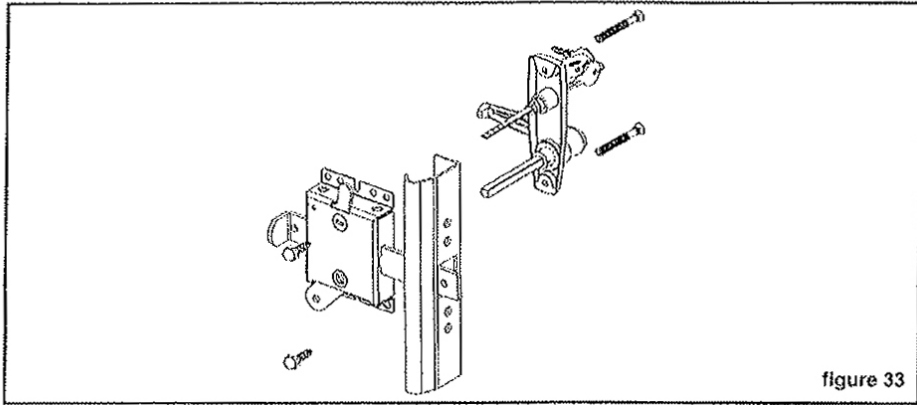


figure 33

BAR-LOCK

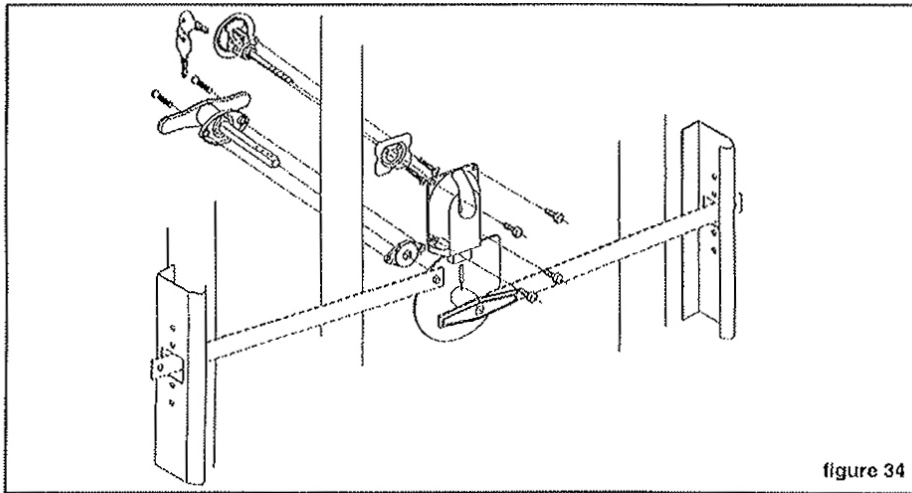


figure 34

CABLE LOCK

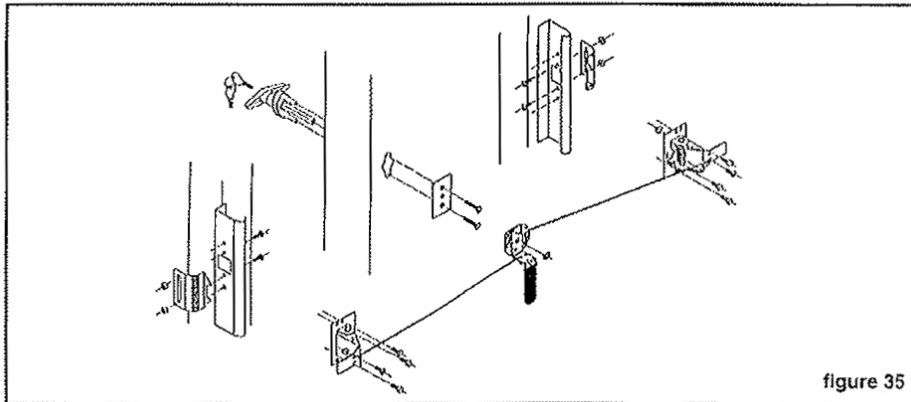


figure 35