

PACKING LIST

ITEM	DESCRIPTION	QTY	ITEM	DESCRIPTION	QTY
1	Clutch plate	1	9	Shim washer, thick	2
2	Clutch shaft, standard T	1	10	Shim washer, thin	3
3	Bearing, 3/4" I.D.	2	11	Castle nut 3/4-16"	1
4	Sprocket 41B10 x 3/4"	1	12	Flat washer, 3/4"	5
5	V Belt, 5L x 30"	1	13	Cotter pin, 5/32" x 1-1/2"	1
6	Pulley, 7"	1	14	Roll pin, 1/4" Dia. x 1-1/8" long	1
7	Clutch spring, (1/3 & 1/2 HP)	1	15	Roll pin, 1/4" Dia x 2" long	1
	Clutch spring, (3/4 & 1 HP)	1	16	Push ring, 3/4" I.D.	1
8	Clutch disc	1			

NOTE: Refer to the owner's manual provided with the operator for all mounting and wiring instructions.

REMOVE EXISTING SHAFT

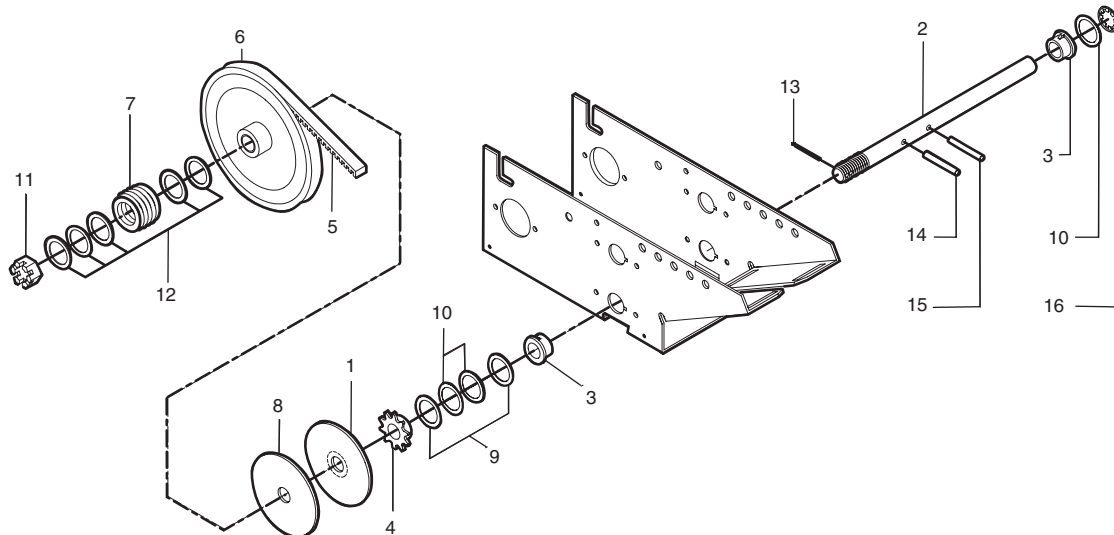
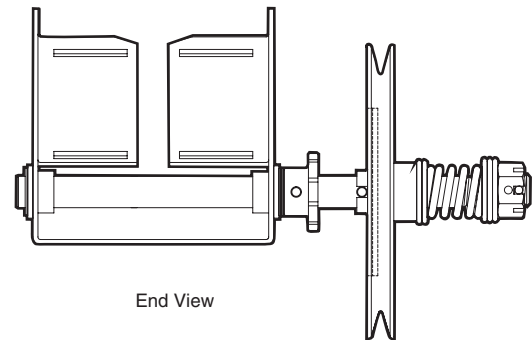
1. Disconnect power to operator.
2. Remove the reducing chain connecting the clutch and output shafts.
3. Remove the drive belt from the clutch.
4. Remove the push ring and shim washer from the end of the clutch shaft and slide clutch shaft from motor housing.
5. Remove the flanged bearings from motor housing.

INSTALLING NEW CLUTCH SHAFT

Assemble the drive belt side of the clutch shaft. Insert a flanged bearing into each side of the housing as shown, and insert the assembled clutch shaft. Secure the shaft in place with the push ring provided. Replace the drive belt and reducing chain. Restore power to operator.

⚠️ ⚠️ WARNING

To prevent possible **SERIOUS INJURY** or **DEATH**, disconnect electric power to operator **BEFORE** installing. **ALL** electrical connections **MUST** be made by a qualified individual.



***HOW TO ORDER
REPAIR PARTS***

DEVANCO CANADA

19192 HAY ROAD, UNIT Q
SUMMERSTOWN, ON K0C 2E0

TOLL FREE: 855-931-3334

www.devancocanada.com

**WHEN ORDERING REPAIR PARTS
PLEASE SUPPLY THE
FOLLOWING INFORMATION:**

- ✓ PART NUMBER
- ✓ DESCRIPTION
- ✓ MODEL NUMBER