

LiftMaster®

BRAKE ASSEMBLY KIT FOR MODEL GH OPERATOR

BRAKE ASSEMBLY KIT MODEL NUMBERS:

For Logic 5.0

K75-36874-1 (1PH)
K75-36874-3 (3PH)

For Logic 4.0 and prior

K75-12584
K75-12585
K75-12586

APPLICATION REQUIREMENTS:

Replacement of Brake Assembly and/or its components for a Model GH Operator.

INSTALLATION

NOTE: Refer to the owner's manual provided with the operator for all mounting and wiring instructions.

REMOVE ELECTRICAL BOX

Remove the master link from the limit chain, remove the chain and set it aside. Open the electrical box cover. Disconnect the motor wires that pass into the electrical box. Loosen the two screws of the conduit retaining clamp so that the length of conduit is freed. Remove the four flanged hex screws securing the electrical box to the gear reducer housing. Carefully remove the electrical box and set it aside (the motor wires should slide easily from the conduit).

WARNING

Disconnect electric power at the fuse box BEFORE proceeding. If necessary remove the operator from its mounted position.

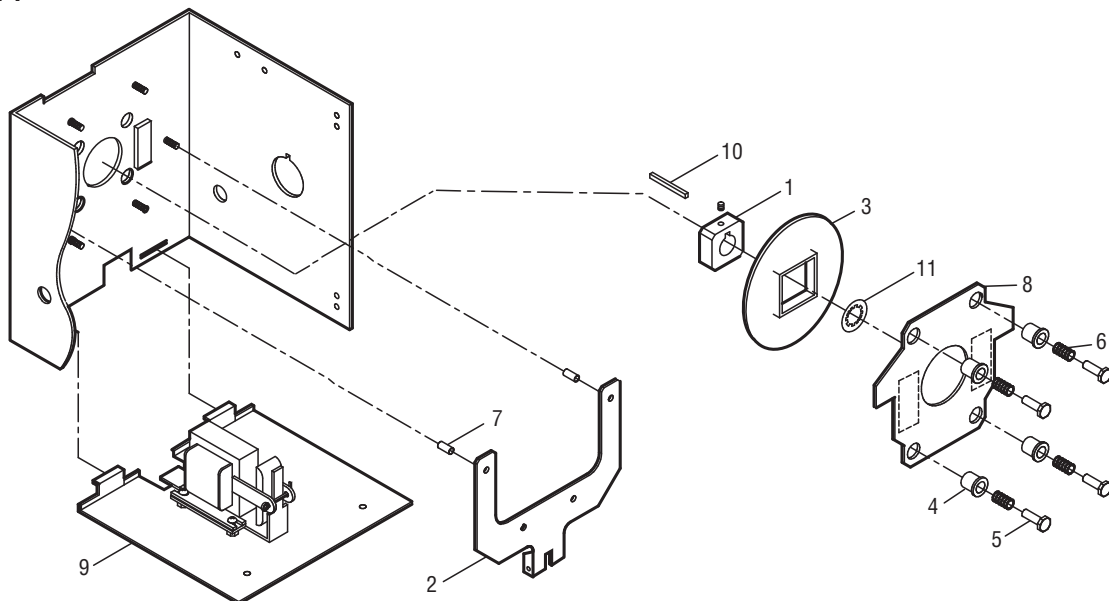
WARNING

BEFORE beginning, ensure replacement brake kit is of the same power requirements as existing incoming power.

CARTON INVENTORY

| ITEM | PART NUMBER | DESCRIPTION | QTY |
|------|-------------|---|-----|
| 1 | 07-10179 | Brake Hub | 1 |
| 2 | 10-10190 | Brake Release Lever | 1 |
| 3 | 10-10191 | Brake Disk | 1 |
| 4 | 11-10192 | Spring Cup for Brake Assembly | 4 |
| 5 | 11-10193 | Brake Stud | 4 |
| 6 | 18-10194 | Spring, Compression x .87" | 4 |
| 7 | 31-10186 | Spacer, .20" x .31" long | 2 |
| 8 | 75-10184 | Brake Pressure Plate Assembly | 1 |
| 9 | K22-36899 | Single Phase Brake Solenoid Assembly (Logic 5.0) | 1 |
| | K22-36900 | Three Phase Brake Solenoid Assembly (Logic 5.0) | 1 |
| | 75-11034 | Brake Solenoid Assembly (Logic 4.0 and prior - 115 V Operators) | 1 |
| | 75-11035 | Brake Solenoid Assembly (Logic 4.0 and prior - 230-460 V Operators) | 1 |
| | 75-11036 | Brake Solenoid Assembly (Logic 4.0 and prior - 575 V Operators) | 1 |
| 10 | 80-9001 | Feather Key | 1 |
| 11 | 87-P-062 | Push on Fastener 5/8" Internal Star | 1 |

FIGURE 1



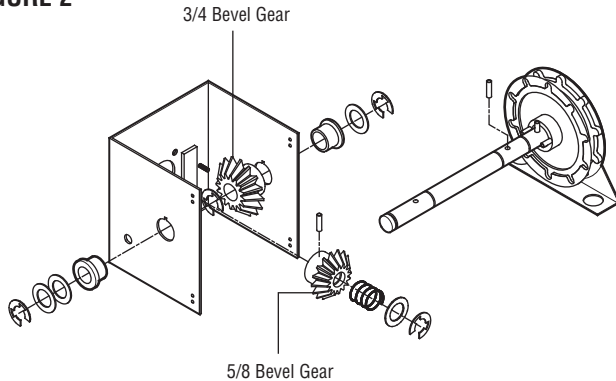
For more information, please visit www.devancocanada.com or call toll free at 855-931-3334

REMOVE HAND-CHAIN SHAFT ASSEMBLY:

Retain the hand-chain shaft components removed in the following steps separately (Figure 2). Remove the E-ring and the two washers from the end of the hand chain shaft. Remove the E-ring from the opposite side of the gear reducer housing and the E-ring securing the 3/4" bevel gear as well. Remove the roll pin pinning the bevel gear to the shaft.

Slide the hand chain shaft out of the gear reducer housing. The bevel gear will slide from the end of the shaft as it is removed. Remove the two flanged bearings from the gear reducer housing.

FIGURE 2

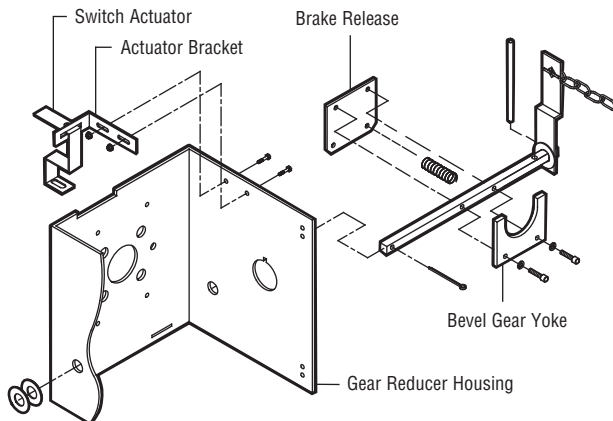


Remove the E-ring, washer, and spring from the end of the gear reducer shaft. Remove the roll pin from the 5/8" bevel gear and slide the gear from the end of the shaft.

REMOVE DISCONNECT ASSEMBLY:

Retain the disconnect assembly components and hardware removed in the following steps separately. Refer to Figure 3 as necessary. Remove the screws and nuts securing the actuator bracket to the gear reducer housing. Remove the bracket and switch actuator and set them aside. Disconnect the compression spring from the end of the brake release.

FIGURE 3



Remove the screws and lock washers from the disconnect shaft. Remove the bevel gear yoke and the brake release and set them aside. Remove the 3" roll pin from the disconnect shaft.

REMOVE OLD BRAKE ASSEMBLY:

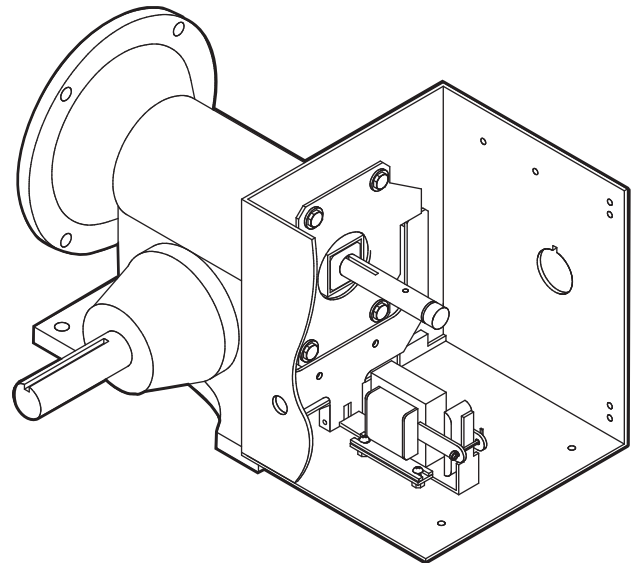
Refer to Figure 1 as necessary. Remove the four brake studs along with their springs and spring cups. Remove the brake pressure plate from the brake release lever and release lever spacers.

Remove the push on fastener from the end of the gear reducer shaft. Remove the brake disk and brake hub. Remove the screws securing the solenoid brake assembly to the housing support bracket. Remove the brake solenoid assembly from the housing.

INSTALLING NEW BRAKE ASSEMBLY:

Install the new brake assembly by following the steps outlined above in reverse order. Refer to Figures 1 through 4 and refer to the owner's manual as necessary.

FIGURE 4



COMPLETING INSTALLATION:

When the new brake assembly is in place, follow a similar "reverse order" process to reinstall the disconnect assembly and the hand chain shaft.

To reinstall the electrical box first place the box on the gear reducer housing, aligning the slots in the bottom of the box with their corresponding holes on the housing and mounting bracket. Do not tighten the screws at this time.

Replace the limit chain and secure with the master link. Slide the electrical box in its slots until most of the slack in the limit chain is picked up, being careful not to over tighten the chain. Secure the box to the gear housing by tightening the hex screws.

Reconnect the motor wires (as shown in the diagram inside electrical box cover or the owner's manual) and close the electrical box cover. Restoring power completes the installation.

***HOW TO ORDER
REPAIR PARTS***

DEVANCO CANADA

19192 HAY ROAD, UNIT Q
SUMMERSTOWN, ON K0C 2E0

TOLL FREE: 855-931-3334

www.devancocanada.com

**WHEN ORDERING REPAIR PARTS
PLEASE SUPPLY THE
FOLLOWING INFORMATION:**

- ✓ PART NUMBER
- ✓ DESCRIPTION
- ✓ MODEL NUMBER