

CHAMBERLAIN®

LiftMaster®

PROFESSIONAL

CLUTCH ASSEMBLY KIT

K75-12858

APPLICATION

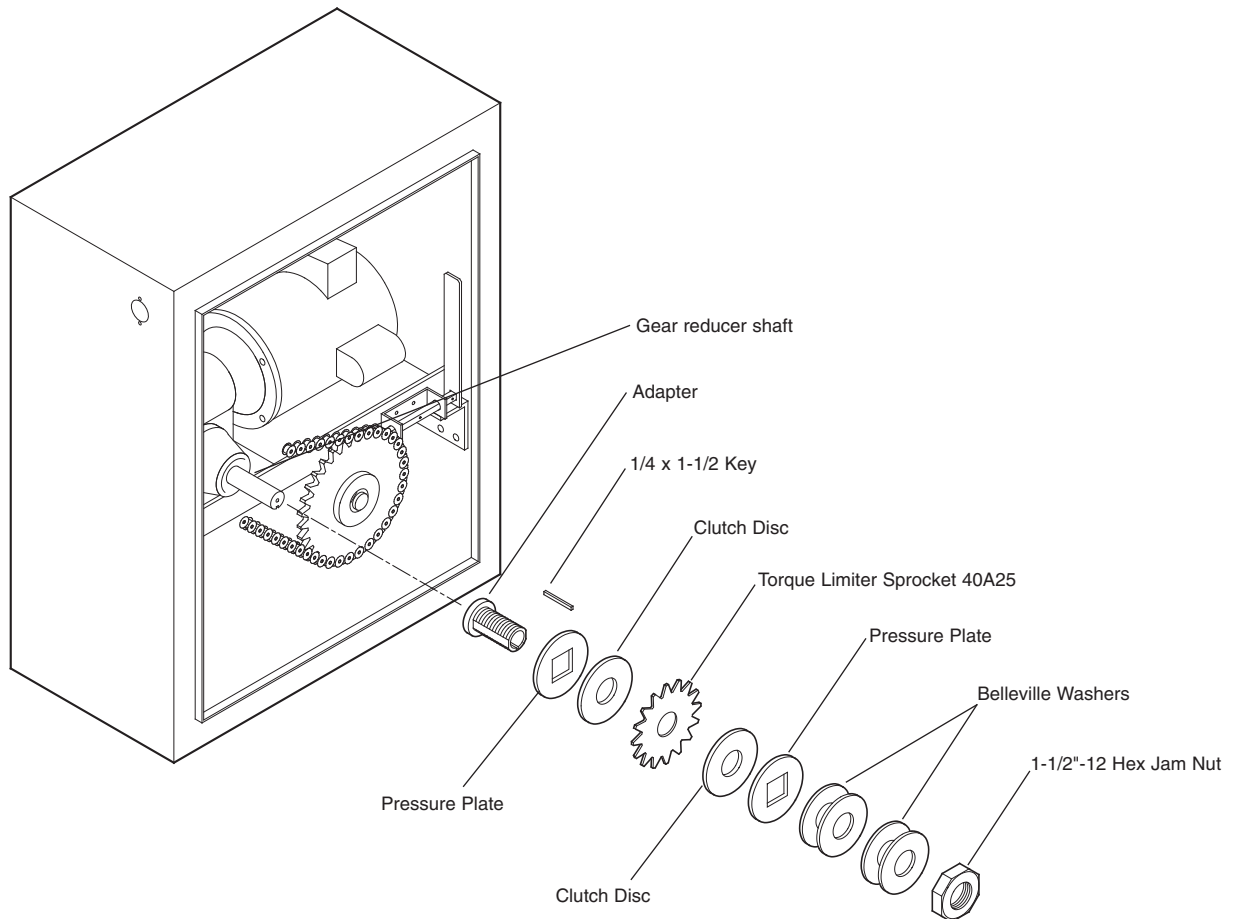
Replacement of clutch assembly for model SL580/590/595 and GT operators.

1. Disconnect power from the operator.
2. Remove cover to access the clutch assembly.
3. Remove the master link and take the chain off.
4. Remove hex head nut from clutch shaft.
5. Remove hex nut, washers, pressure plates, sprocket, and clutch disc.
6. Reverse steps 2-5 to install new clutch using new hardware provided in kit.
7. Restore power to the operator.

WARNING

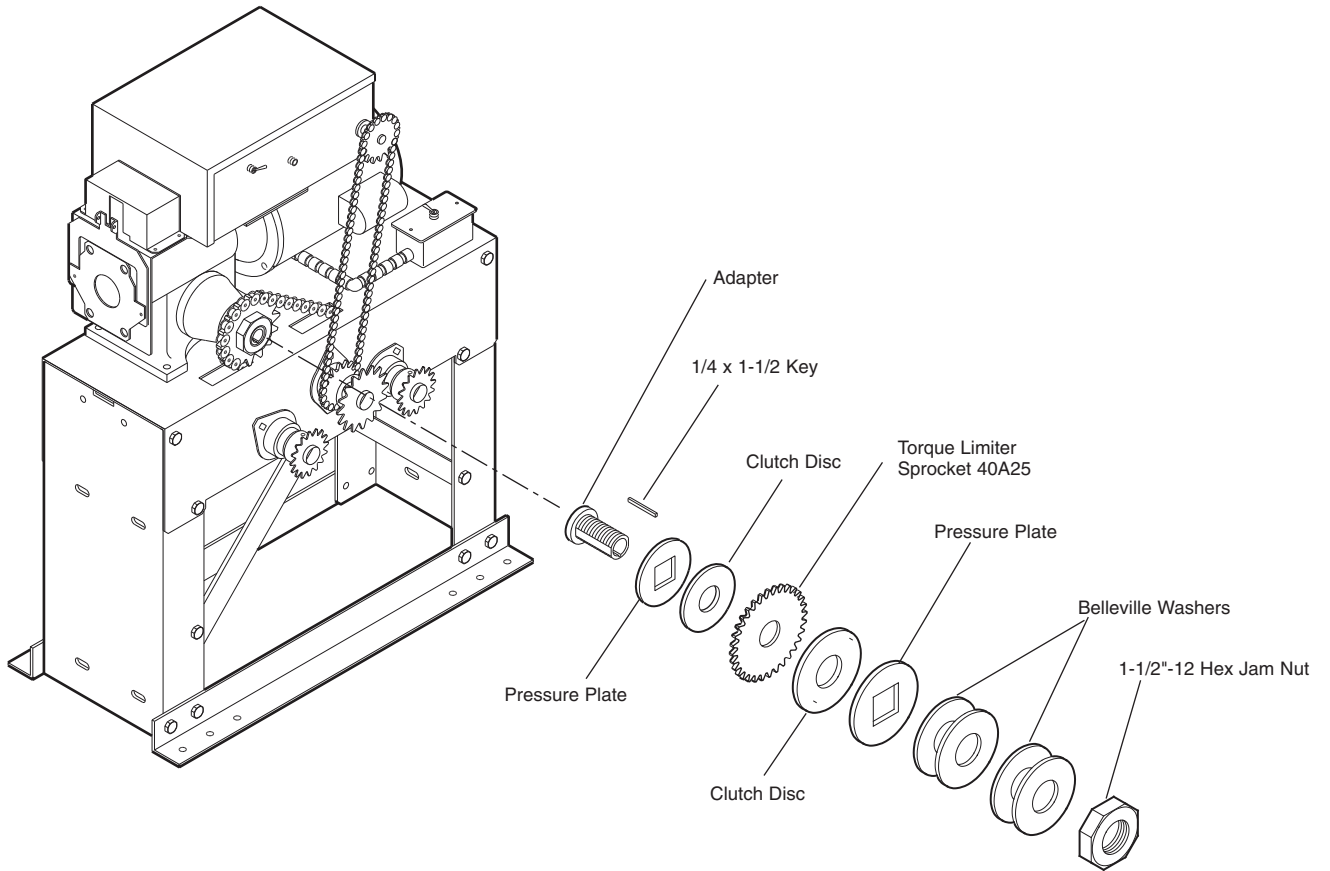
To prevent possible SERIOUS INJURY or DEATH, disconnect electric power to operator BEFORE installing. ALL electrical connections MUST be made by a qualified individual.

SL590/595 OPERATORS

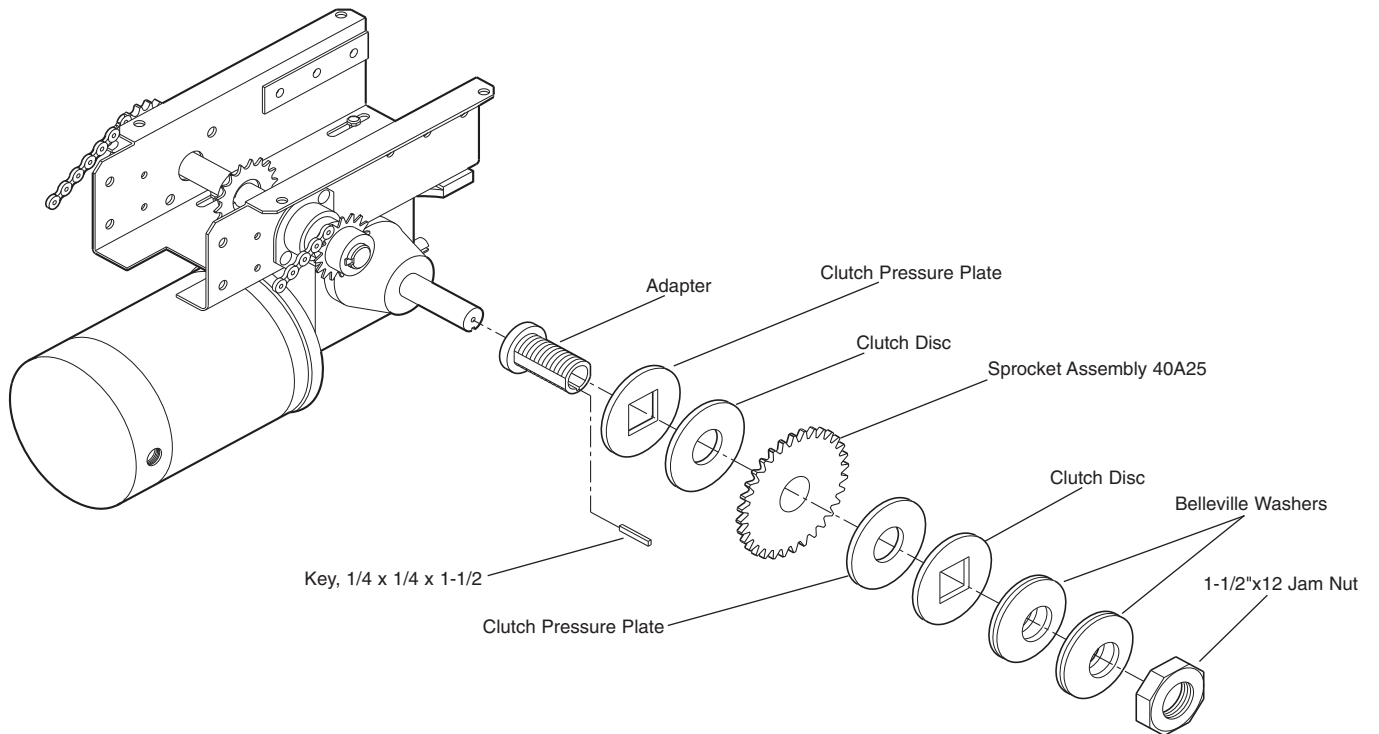


For more information, please visit www.devancocanada.com or call toll free at 855-931-3334

SL580 OPERATOR



GT OPERATORS



***HOW TO ORDER
REPAIR PARTS***

DEVANCO CANADA

19192 HAY ROAD, UNIT Q
SUMMERSTOWN, ON K0C 2E0

TOLL FREE: 855-931-3334

www.devancocanada.com

**WHEN ORDERING REPAIR PARTS
PLEASE SUPPLY THE
FOLLOWING INFORMATION:**

- ✓ PART NUMBER
- ✓ DESCRIPTION
- ✓ MODEL NUMBER