

PHOTO075

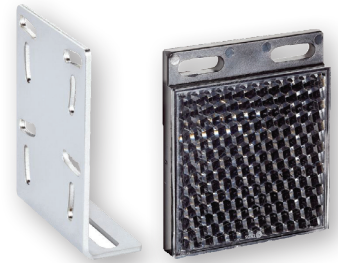
NON-MONITORED PHOTOELECTRIC CELLS

STANDARD FEATURES

- Non-monitored ancillary external entrapment protection device.
- To be used to supplement primary monitored external entrapment devices or constant-pressure-to-close operation.
- Compatible with non-monitored operators without the use of an interface module.
- UL325⁽⁸⁾ recognized component.
- Retro-reflective technology.
- IP67 enclosure rating.
- PinPoint™ LED with bright and precise light spot. Immunity to ambient light.
- Long sensing ranges.
- Rugged sensor housing with metal reinforced holes.
- Unique assembly system for mounting and aligning the photoelectric cell within a few seconds.
- Includes mounting bracket, reflector and 2 m (6.5 ft.) of cable for easy installation.

OPTIONS

- Compatible with primary and ancillary entrapment protection devices.
Ex: PHOTO070, PHOTO061, SENSEEDGE044UM LIGHTCURTAIN001, etc.



- **Small Housing Design**
- **Simplified Wiring**
- **Easy to Install and Align**
- **UL325 Recognized Component**

PHOTO075 photoelectric retro-reflective cells are characterized by their long sensing ranges and their small housing.

They offer quick and flexible installation, ensure error-free operation, and keep costs under control. Combined with an extensive range of accessories, these photoelectric cells are able to support a wide variety of applications.

Product Specification Sheet

PHOTO075

NON-MONITORED PHOTOELECTRIC CELLS

TECHNICAL SPECIFICATIONS

Items Supplied:	Photoelectric Sensor, Mounting Bracket, Reflector
Sensor / Detection Principle:	Photoelectric Retro-Reflective Sensor / Dual Lens
Dimensions (W x H x D):	20 mm (0.7") x 50 mm (1.9") x 51.5 mm (2.0")
Sensing Range Max.:	0.08 m to 12 m (0.26 to 39.3 ft.)
Sensing Range:	0.15 m to 10 m (0.49 to 32.8 ft.)
Type of Light :	Visible Red Light
Light Source / Light Spot Size / Distance:	PinPoint™ LED ⁽¹⁾ / Ø 58 mm (2.3") / 5 m (16.4 ft.)
Wave Length:	625 nm (24.6")
Supply Voltage:	24 VAC/VDC to 240 VAC/VDC ⁽²⁾
Ripple:	± 5 Vpp ⁽³⁾
Power Consumption:	≤ 2.5 VA
Switching Output:	Relay, SPDT, Electrically Isolated ⁽⁴⁾
Switching Load Max. (Current/Voltage):	0.11 A (250 Vdc) / 3 A (30 Vdc) / 3 A (250 VAC)
Response Time:	≤ 10 ms
Switching Frequency:	20 Hz ⁽⁵⁾
Connection Type:	Cable, 5-wire, 2 m (6.56 ft.) ⁽⁶⁾
Cable Type:	PVC
Conductor Cross-Section:	0.25 mm ²
Circuit Protection:	C ⁽⁷⁾
Weight:	115 g (0.25 lbs)
Polarization Filter:	✓
Housing Material:	Plastic, ABS/PMMA
Enclosure Rating:	IP67
Certifications:	UL325 ⁽⁸⁾
Relay Switching Cycles Min.:	100,000 Cycles (3 A)
Usage Category:	AC-15, DC-13
Ambient Operating Temperature:	-30 °C to +60 °C (-22 °F to 140 °F) ⁽⁹⁾
Ambient Storage Temperature:	-40 °C to +70 °C (-40 °F to 158 °F)
MTTF _D :	1.456 years
DC _{avg} :	0 %
Reflector Mounting System Type:	Screw-on, 2 Hole Mounting
Reflector Ambient Operating Temperature:	-20 °C to +65 °C (-4 °F to 149 °F)
Reflector Reflective Area:	47 mm x 47 mm (1.85" x 1.85")
Reflector Material:	PMMA/ABS
Bracket Material:	Steel, Zinc Coated

⁽¹⁾ Average Service Life: 100,000 h at T_U = +25 °C (77 °F).

⁽²⁾ + 10 %.

⁽³⁾ May not exceed or fall below U_I tolerances.

⁽⁴⁾ Provide suitable spark suppression for inductive or capacitive loads.

⁽⁵⁾ With light/dark ratio 1:1.

⁽⁶⁾ Do not bend below 0 °C (32 °F).

⁽⁷⁾ C=interference suppression.

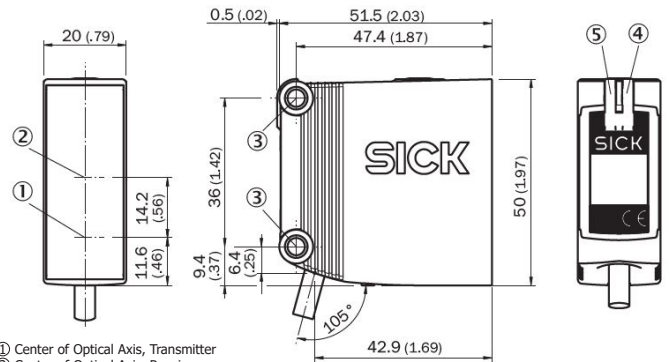
⁽⁸⁾ Complies with the UL325 standard when used with sturdy protection hood (sold separately).

⁽⁹⁾ UL: 10 °C to +50 °C (50 °F to 122 °F).

PinPoint™ LED is a Registered T.M. of SICK AG.

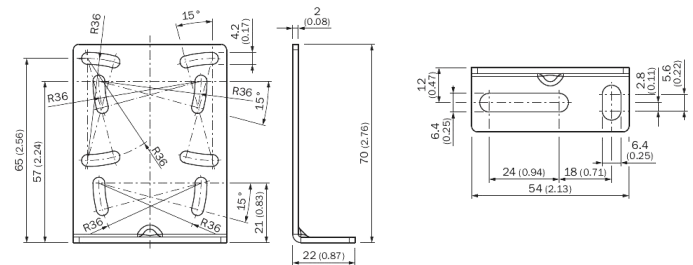
DIMENSIONS

PHOTOELECTRIC CELL

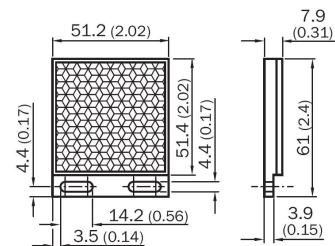


- ① Center of Optical Axis, Transmitter
- ② Center of Optical Axis, Receiver
- ③ Mounting Hole, Ø 4.2 mm (0.16")
- ④ LED Indicator Yellow: Status of Received Light Beam
- ⑤ LED Indicator Green: Power On

BRACKET



REFLECTOR



CONNECTION DIAGRAM

