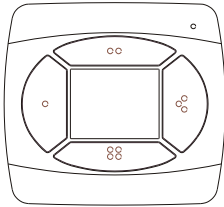


ERONE - WALL TRANSMITTER

CE 06780

USER
MANUAL



SETR 2641-TM

Thank you for choosing a product ERONE.
You are recommended to read carefully this manual before to install the product

ERONE SETR2641-TM is a AM/ASK transmitter operating at 433,92 MHz, designed for the control of automatic closing systems thanks to its very high security coding system (KeeLoq® Hopping code). The code sent by the transmitter changes at each activation, avoiding any scanning and copying risk. A special algorithm allows to keep synchronized transmitter and receiver. The receiver which makes the activation has to be connected during the installation to the device to control (gate, garage door, rolling shutter, awnings, anti-burglar systems, lighting). The transmitter SETR2641-TM is advised to be used with the Radioprogrammer for rolling shutters and awnings Erone type SETR2641R433-RM. Follow the radioprogrammer installation manual for the transmitter memorization.

Using the above Radioprogrammer, the transmitters keys can have the following functionality (Fig. 1) :

- Key A : Roll - Unroll
- Key B : Awning unroll (rolling shutter opening)
- Key D : Awning roll (rolling shutter closing)
- Key C : Stop

The product fully complies to the requirements of the European Directives 73/23/CEE, 89/336/CEE, 99/05/CE.

Technical Specifications

Carrier frequency	433.92 MHz
E.r.p. power	150 uW
Modulation	AM/ASK
Security code combinations	2 ⁶⁴
Supply voltage	6 Vdc
Batteries	2 x CR 2025 lithium
Current consumption	8,4 mA
Batteries life	2 years
Weight	47 gr.
Dimensions	80 x 74 x 16 mm

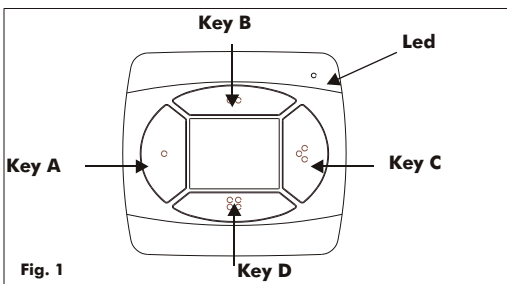


Fig. 1

Fixing

For the wall fixing, locate a plane position not metallic. Place on the back side of the transmitter, inside the 2 rectangular areas, the 2 strips supplied (Fig. 2), remove the protection films and fix the transmitter.

Where a screws fixing is required, divide the bottom support by the cover, making use of a screwdriver, on the side slot of the box.

Locate the places for the holes by using the guide holes of the support. Drill and position the plugs (Ø 4 mms). Fix the lower support through the screws supplied.

Then fix the cover on the support by pressing it up to the click of the hooks.

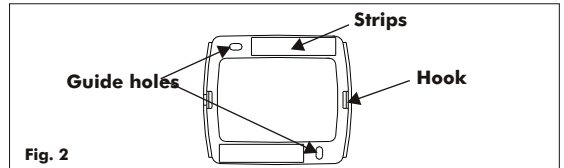


Fig. 2

Batteries replacement

If the led doesn't switch on or flashes, replace the batteries, following the procedure below :

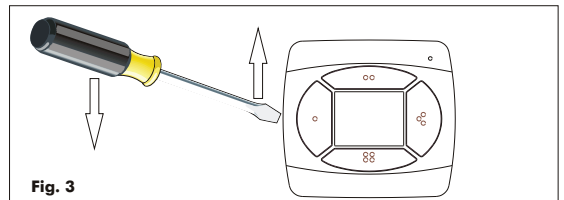


Fig. 3

- 1) Remove the cover with the electronic card by using a screw-driver and acting on the side slot (Fig. 2).
- 2) Remove the batteries by inserting the point of the screwdriver on the on the semicircle niche present on the perimeter of the hole which contains the batteries (Fig. 3).
- 3) Insert the new batteries opportunely lifting the battery contact : use lithium batteries CR2025.
- 4) Observe the polarity of the batteries with the positive turned upward.

NOTE : The disposal of unloaded batteries must have effected making use of the special

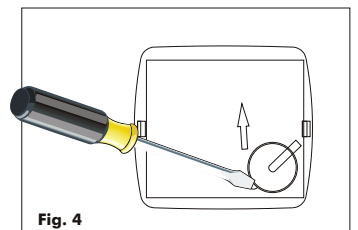


Fig. 4

GUARANTEE

The guarantee period of all Erone products is 24 months, beginning from the manufacturer date. During this period, if the product does not work correctly, due to a defective component, the product will be repaired or substituted at the discretion of the producer. The guarantee does not cover the plastic container integrity. After-sale service is supplied at the producer's factory.

**For more information:
www.devancocanada.com
or call toll free at 855-931-3334**

***HOW TO ORDER
REPAIR PARTS***

DEVANCO CANADA

19192 HAY ROAD, UNIT Q
SUMMERSTOWN, ON K0C 2E0

TOLL FREE: 855-931-3334

www.devancocanada.com

**WHEN ORDERING REPAIR PARTS
PLEASE SUPPLY THE
FOLLOWING INFORMATION:**

- ✓ PART NUMBER**
- ✓ DESCRIPTION**
- ✓ MODEL NUMBER**