

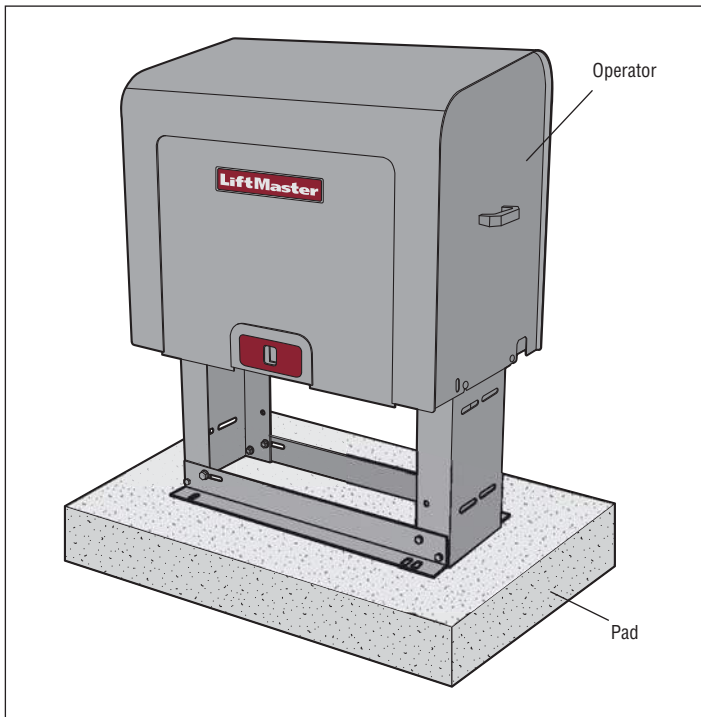
INSTALLATION

CAUTION

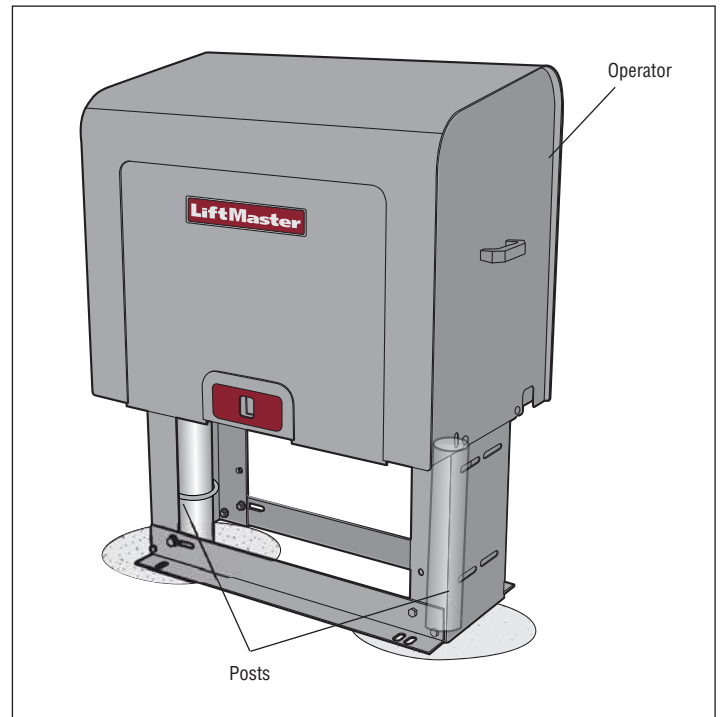
- To AVOID damaging gas, power or other underground utility lines, contact underground utility locating companies BEFORE digging more than 18 inches (46 cm) deep.
- DO NOT touch the heater when switch is on, heater may be hot.
- To prevent damage to the operator or gate, DO NOT drive the limit (nuts) actuators on the shaft past their normal positions.

TYPES OF INSTALLATIONS

PAD MOUNT INSTALLATION



POST MOUNT INSTALLATION



INSTALLATION

STEP 1

INSTALL THE OPERATOR

Check the national and local building codes before installation.

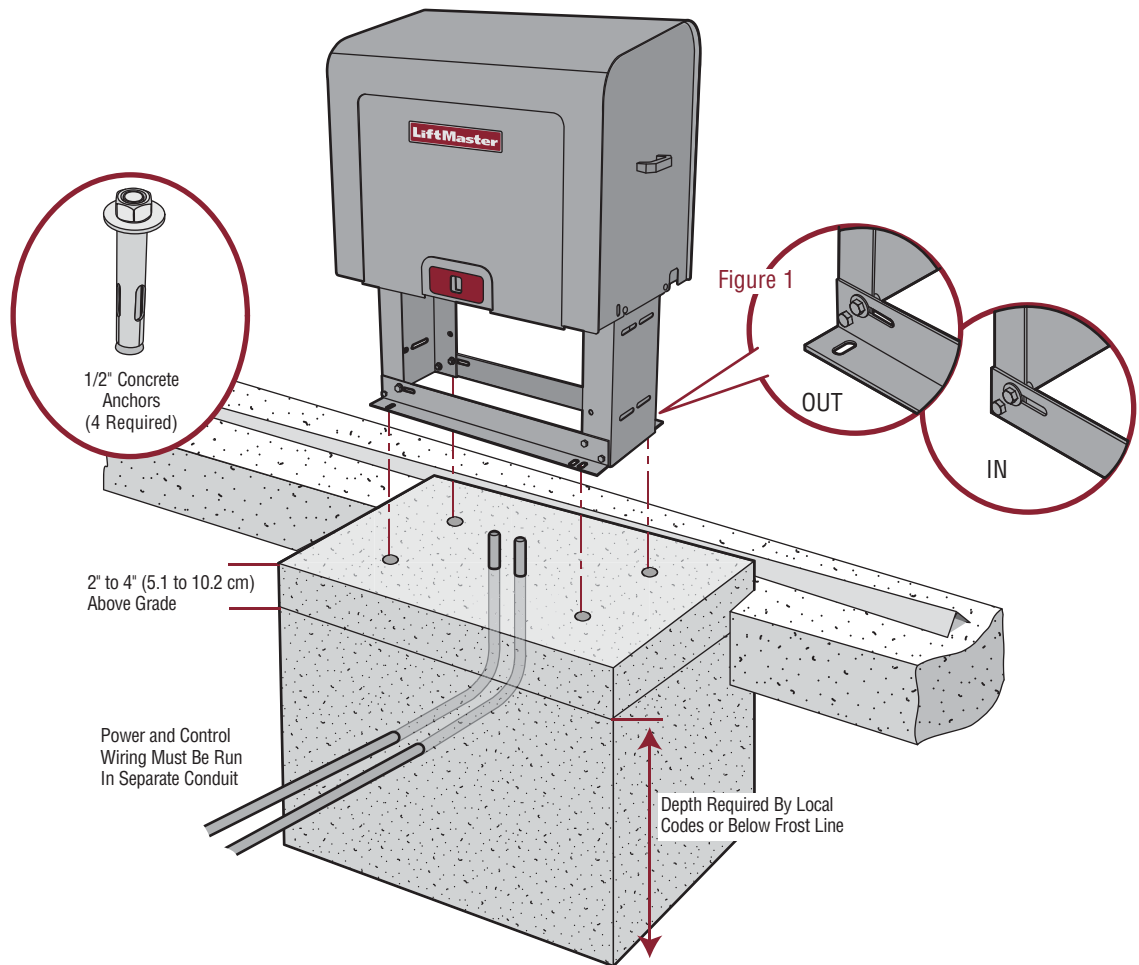
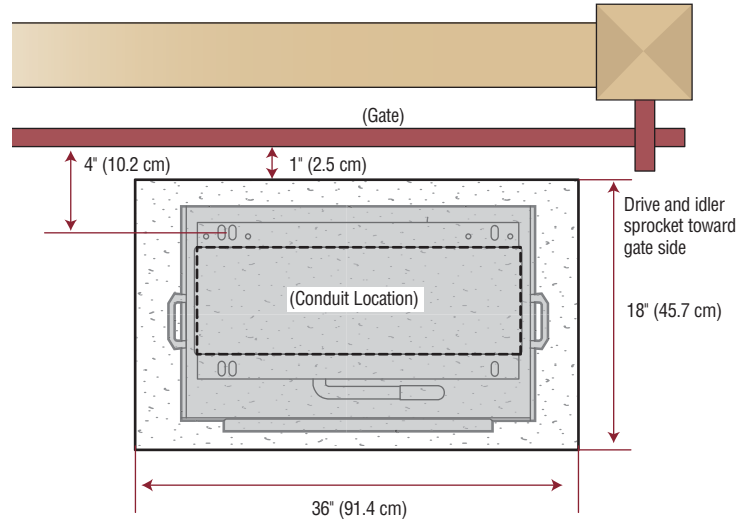
PAD MOUNT INSTALLATION

RETRO-FIT INSTALLATION

The operator is shipped from the factory with the lower mounting angles configured out (Figure 1). If you have pad constrictions, either angle can be unbolted and reversed to angle in. **NOTE:** If you are replacing an SL580 and wish to use the same pad mounting hardware, the gate side mounting angle must be installed angle in.

NEW INSTALLATION

1. Lay out concrete pad.
2. Install the electrical conduit.
3. Pour a concrete pad (reinforced concrete is recommended).
4. Secure operator to the concrete pad using four 1/2" concrete anchors (not provided).



INSTALLATION

STEP 1 (continued)

INSTALL THE OPERATOR

Check the national and local building codes before installation.

POST MOUNT INSTALLATION

RETRO-FIT INSTALLATION

The operators come from the factory configured to mount to an inside the frame post mount dimension of 26" (66 cm) (outside to outside of posts). The frame comes slotted to accommodate posts 24-1/8" (61 cm) to 26" (66 cm), outside to outside. **NOTE:** If you are replacing a SL580, the frame will require adjustment to 24-1/8".

NEW INSTALLATION

1. Locate and anchor two posts made of 3" (7.6 cm) outer diameter heavy walled pipe. Posts should be parallel and square to the gate.
2. Locate electrical conduit, as required, prior to pouring concrete.
3. Secure operator to posts using four 3" (7.6 cm) U-bolts and hardware provided.

